

## Product datasheet for **TA388328M**

### **CETN1 Rabbit Polyclonal Antibody**

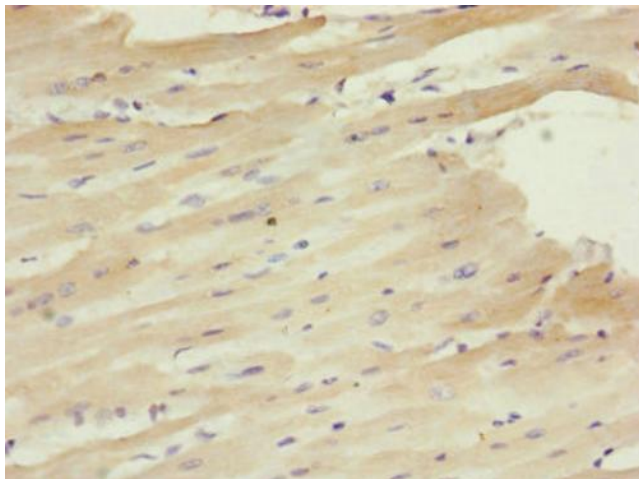
#### **Product data:**

Product Type:	Primary Antibodies
Applications:	IHC, WB
Recommended Dilution:	Recommended dilution: WB:1:1000-1:5000, IHC:1:20-1:200
Reactivity:	Mouse, Human
Host:	Rabbit
Isotype:	IgG
Clonality:	Polyclonal
Immunogen:	Recombinant Human Centrin-1 protein (1-172AA)
Formulation:	PBS with 0.02% sodium azide, 50% glycerol, pH7.3.
Concentration:	lot specific
Purification:	Antigen Affinity Purified
Conjugation:	Unconjugated
Storage:	Upon receipt, store at -20°C or -80°C. Avoid repeated freeze.
Stability:	1 year from dispatch.
Database Link:	<a href="#">Q12798</a>
Background:	Plays a fundamental role in microtubule-organizing center structure and function.

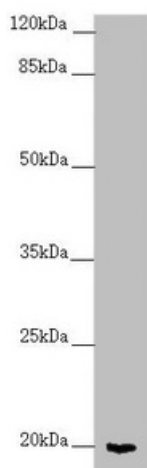


[View online »](#)

## Product images:



Immunohistochemistry of paraffin-embedded human heart tissue using [TA388328] at dilution of 1:100



Western blot  
All lanes: CETN1 antibody at 2.7 µg/ml + Mouse gonadal tissue  
Secondary  
Goat polyclonal to rabbit IgG at 1/10000 dilution  
Predicted band size: 20 kDa  
Observed band size: 20 kDa