

## Product datasheet for **TA388326**

### **CALR3 Rabbit Polyclonal Antibody**

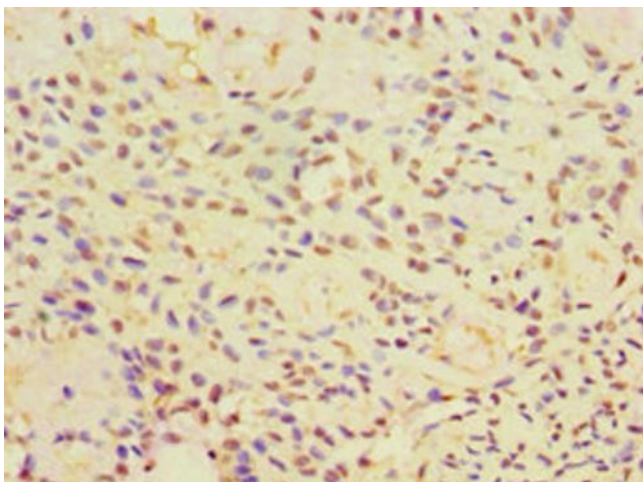
#### **Product data:**

Product Type:	Primary Antibodies
Applications:	IHC, WB
Recommended Dilution:	Recommended dilution: WB:1:500-1:5000, IHC:1:20-1:200
Reactivity:	Rat, Human
Host:	Rabbit
Isotype:	IgG
Clonality:	Polyclonal
Immunogen:	Recombinant Human Calreticulin-3 protein (135-384AA)
Formulation:	PBS with 0.02% sodium azide, 50% glycerol, pH7.3.
Concentration:	lot specific
Purification:	Antigen Affinity Purified
Conjugation:	Unconjugated
Storage:	Upon receipt, store at -20°C or -80°C. Avoid repeated freeze.
Stability:	1 year from dispatch.
Database Link:	<a href="#">Q96L12</a>
Background:	During spermatogenesis, may act as a lectin-independent chaperone for specific client proteins such as ADAM3. Required for sperm fertility (By similarity). CALR3 capacity for calcium-binding may be absent or much lower than that of CALR.

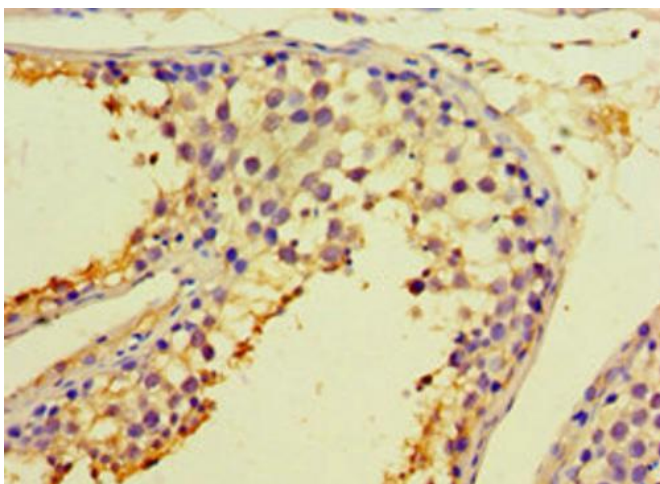


[View online »](#)

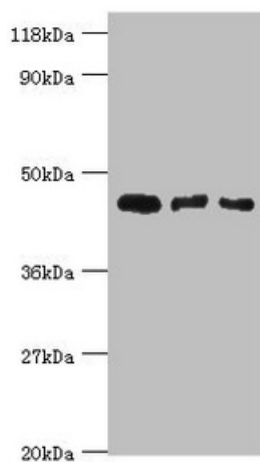
## Product images:



Immunohistochemistry of paraffin-embedded human breast cancer using TA388326 at dilution of 1:100



Immunohistochemistry of paraffin-embedded human testis tissue using TA388326 at dilution of 1:100



Western blot

All lanes: Calreticulin-3 antibody at 4µg/ml

Lane 1: Hela whole cell lysate

Lane 2: HepG2 whole cell lysate

Lane 3: Rat gonad tissue

Secondary

Goat polyclonal to rabbit IgG at 1/10000 dilution

Predicted band size: 45 kDa

Observed band size: 45 kDa