

## Product datasheet for **TA388322**

### **TOMM34 Rabbit Polyclonal Antibody**

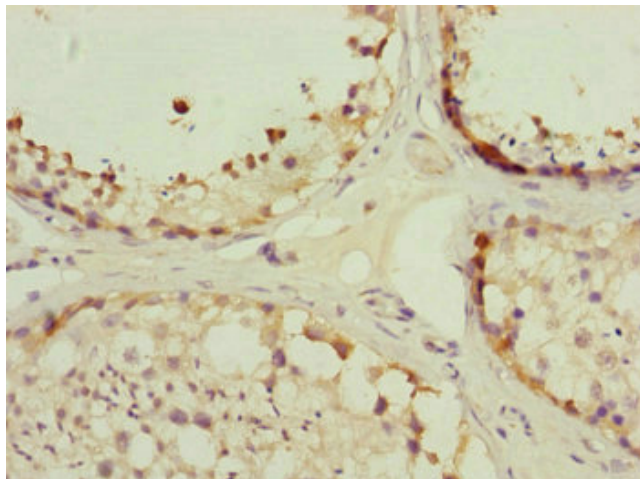
#### **Product data:**

<b>Product Type:</b>	Primary Antibodies
<b>Applications:</b>	IHC, WB
<b>Recommended Dilution:</b>	Recommended dilution: WB:1:1000-1:5000, IHC:1:20-1:200
<b>Reactivity:</b>	Mouse, Human
<b>Host:</b>	Rabbit
<b>Isotype:</b>	IgG
<b>Clonality:</b>	Polyclonal
<b>Immunogen:</b>	Recombinant Human Mitochondrial import receptor subunit TOM34 protein (1-309AA)
<b>Formulation:</b>	PBS with 0.02% sodium azide, 50% glycerol, pH7.3.
<b>Concentration:</b>	lot specific
<b>Purification:</b>	Antigen Affinity Purified
<b>Conjugation:</b>	Unconjugated
<b>Storage:</b>	Upon receipt, store at -20°C or -80°C. Avoid repeated freeze.
<b>Stability:</b>	1 year from dispatch.
<b>Database Link:</b>	<a href="#">Q15785</a>
<b>Background:</b>	Plays a role in the import of cytosolically synthesized preproteins into mitochondria. Binds the mature portion of precursor proteins. Interacts with cellular components, and possesses weak ATPase activity. May be a chaperone-like protein that helps to keep newly synthesized precursors in an unfolded import compatible state.

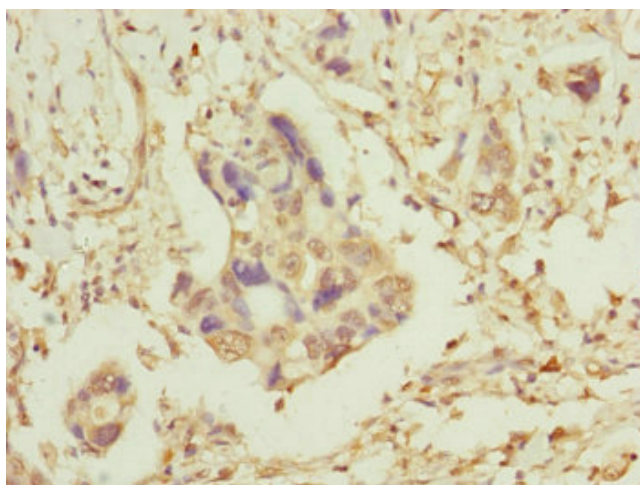


[View online »](#)

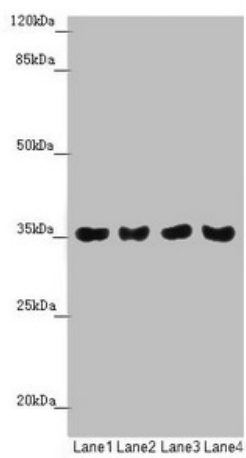
**Product images:**



Immunohistochemistry of paraffin-embedded human testis tissue using TA388322 at dilution of 1:100



Immunohistochemistry of paraffin-embedded human pancreatic cancer using TA388322 at dilution of 1:100



#### Western blot

All lanes: TOMM34 antibody at 1.42 $\mu$ g/ml

Lane 1: Mouse gonadal tissue

Lane 2: A549 whole cell lysate

Lane 3: PC-3 whole cell lysate

Lane 4: A375 whole cell lysate

#### Secondary

Goat polyclonal to rabbit IgG at 1/10000 dilution

Predicted band size: 35 kDa

Observed band size: 35 kDa