

Product datasheet for **TA388320M**

RTRAF Rabbit Polyclonal Antibody

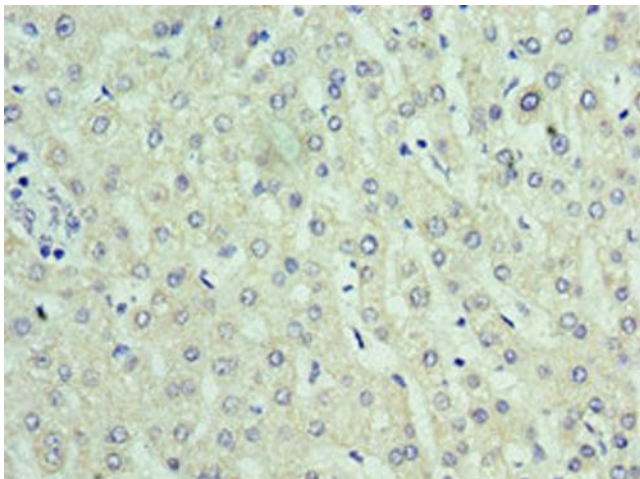
Product data:

Product Type:	Primary Antibodies
Applications:	IHC, WB
Recommended Dilution:	Recommended dilution: WB:1:500-1:2000, IHC:1:20-1:200
Reactivity:	Mouse, Human
Host:	Rabbit
Isotype:	IgG
Clonality:	Polyclonal
Immunogen:	Recombinant Human RNA transcription, translation and transport factor protein (1-244AA)
Formulation:	PBS with 0.02% sodium azide, 50% glycerol, pH7.3.
Concentration:	lot specific
Purification:	Antigen Affinity Purified
Conjugation:	Unconjugated
Storage:	Upon receipt, store at -20°C or -80°C. Avoid repeated freeze.
Stability:	1 year from dispatch.
Database Link:	Q9Y224
Background:	RNA-binding protein involved in modulation of mRNA transcription by Polymerase II. In case of infection by influenza virus A, is involved in viral replication. Component of the tRNA-splicing ligase complex and is required for tRNA ligation (PubMed:24870230). May be required for RNA transport (PubMed:24608264).

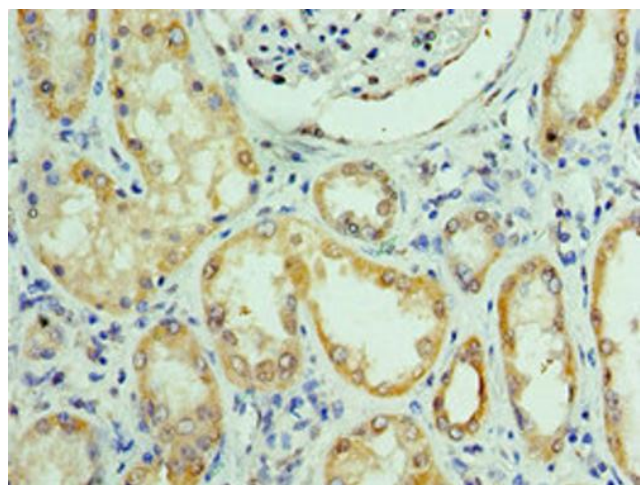


[View online »](#)

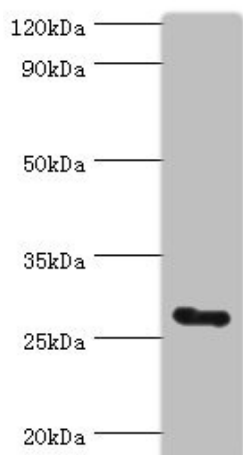
Product images:



Immunohistochemistry of paraffin-embedded human liver tissue using [TA388320] at dilution of 1:100



Immunohistochemistry of paraffin-embedded human kidney tissue using [TA388320] at dilution of 1:100



Western blot

All lanes: C14orf166 antibody at 6µg/ml + Mouse lung tissue

Secondary

Goat polyclonal to rabbit IgG at 1/10000 dilution

Predicted band size: 28 kDa

Observed band size: 28 kDa