

## Product datasheet for **TA388318**

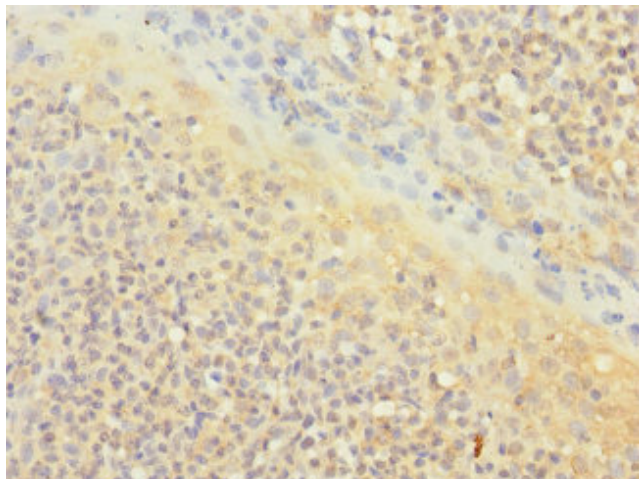
### CD1C Rabbit Polyclonal Antibody

#### Product data:

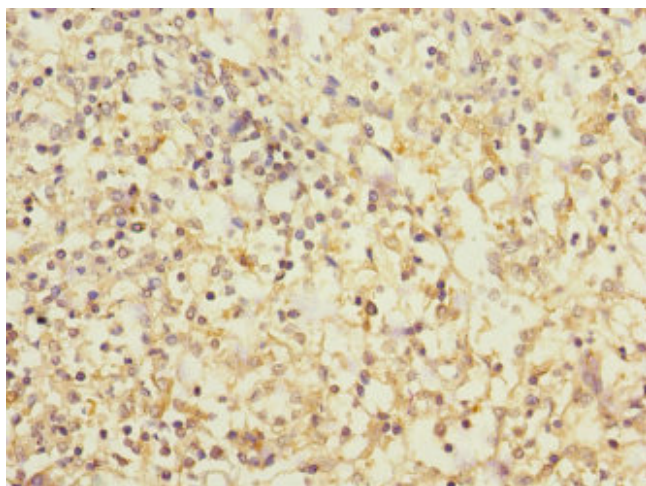
Product Type:	Primary Antibodies
Applications:	IHC, WB
Recommended Dilution:	Recommended dilution: WB:1:1000-1:5000, IHC:1:20-1:200
Reactivity:	Human
Host:	Rabbit
Isotype:	IgG
Clonality:	Polyclonal
Immunogen:	Recombinant Human T-cell surface glycoprotein CD1c protein (18-300AA)
Formulation:	PBS with 0.02% sodium azide, 50% glycerol, pH7.3.
Concentration:	lot specific
Purification:	Antigen Affinity Purified
Conjugation:	Unconjugated
Storage:	Upon receipt, store at -20°C or -80°C. Avoid repeated freeze.
Stability:	1 year from dispatch.
Database Link:	<a href="#">P29017</a>
Background:	Antigen-presenting protein that binds self and non-self lipid and glycolipid antigens and presents them to T-cell receptors on natural killer T-cells.



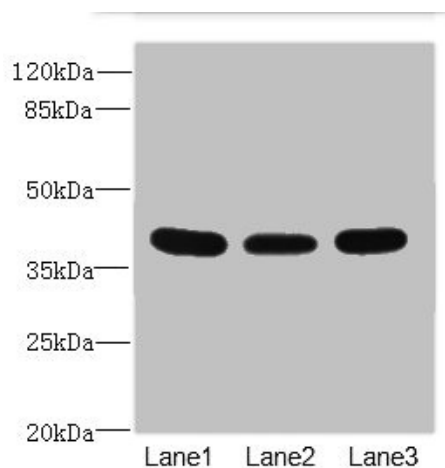
[View online »](#)

**Product images:**

Immunohistochemistry of paraffin-embedded human tonsil tissue using TA388318 at dilution of 1:100



Immunohistochemistry of paraffin-embedded human spleen tissue using TA388318 at dilution of 1:100



## Western blot

All lanes: CD1C antibody at 3.89 $\mu$ g/ml

Lane 1: HepG2 whole cell lysate

Lane 2: A549 whole cell lysate

Lane 3: MCF-7 whole cell lysate

Secondary

Goat polyclonal to rabbit IgG at 1/10000 dilution

Predicted band size: 38 kDa

Observed band size: 38 kDa