

Product datasheet for **TA388315M**

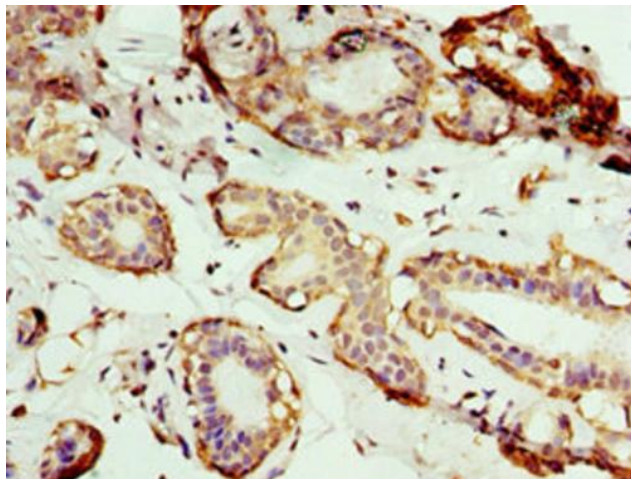
AP1M2 Rabbit Polyclonal Antibody

Product data:

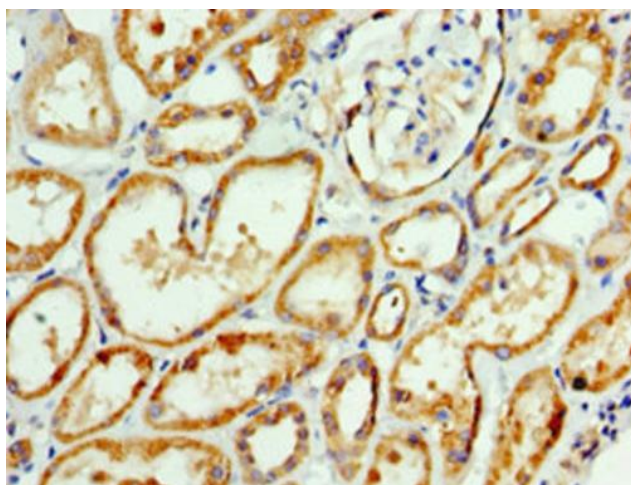
Product Type:	Primary Antibodies
Applications:	IHC, WB
Recommended Dilution:	Recommended dilution: WB:1:500-1:2000, IHC:1:20-1:200
Reactivity:	Mouse, Human
Host:	Rabbit
Isotype:	IgG
Clonality:	Polyclonal
Immunogen:	Recombinant Human AP-1 complex subunit mu-2 protein (164-423AA)
Formulation:	PBS with 0.02% sodium azide, 50% glycerol, pH7.3.
Concentration:	lot specific
Purification:	Antigen Affinity Purified
Conjugation:	Unconjugated
Storage:	Upon receipt, store at -20°C or -80°C. Avoid repeated freeze.
Stability:	1 year from dispatch.
Database Link:	Q9Y6Q5
Background:	Subunit of clathrin-associated adaptor protein complex 1 that plays a role in protein sorting in the trans-Golgi network (TGN) and endosomes. The AP complexes mediate the recruitment of clathrin to membranes and the recognition of sorting signals within the cytosolic tails of transmembrane cargo molecules.

[View online »](#)

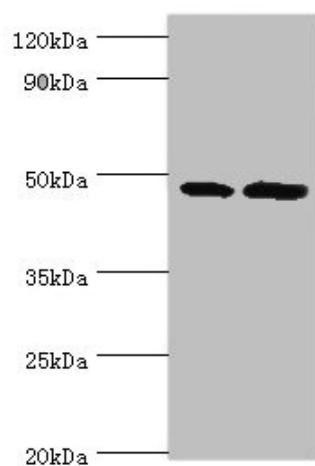
Product images:



Immunohistochemistry of paraffin-embedded human breast cancer using [TA388315] at dilution of 1:100



Immunohistochemistry of paraffin-embedded human kidney tissue using [TA388315] at dilution of 1:100



Western blot

All lanes: AP1M2 antibody at 2 μ g/ml

Lane 1: Mouse small intestine tissue

Lane 2: Mouse kidney tissueSecondary

Goat polyclonal to rabbit IgG at 1/10000 dilution

Predicted band size: 48 kDa

Observed band size: 48 kDa