

Product datasheet for **TA388313M**

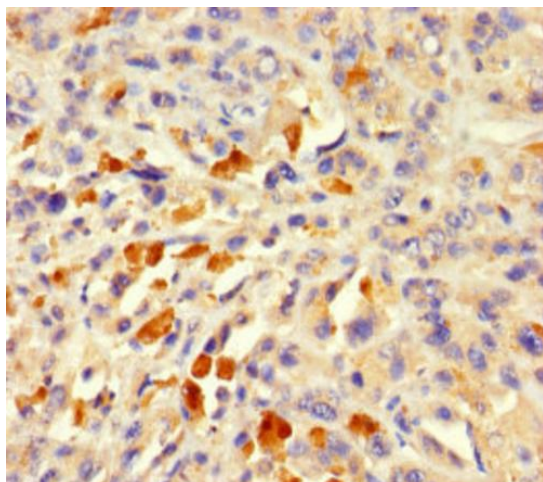
ACTL7A Rabbit Polyclonal Antibody

Product data:

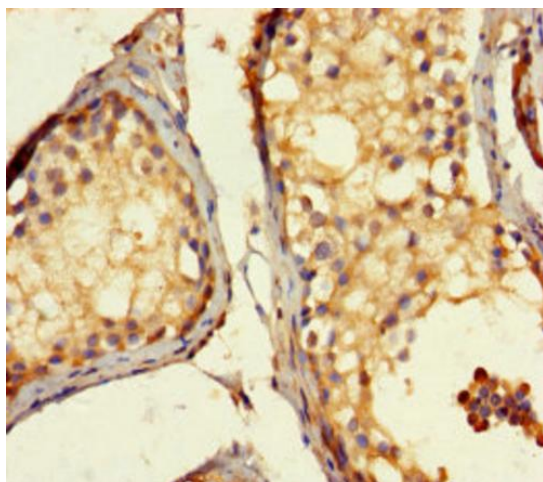
Product Type:	Primary Antibodies
Applications:	IHC, WB
Recommended Dilution:	Recommended dilution: WB:1:1000-1:5000, IHC:1:20-1:200
Reactivity:	Mouse, Human
Host:	Rabbit
Isotype:	IgG
Clonality:	Polyclonal
Immunogen:	Recombinant Human Actin-like protein 7A protein (1-435AA)
Formulation:	Preservative: 0.03% Proclin 300 Constituents: 50% Glycerol, 0.01M PBS, PH 7.4
Concentration:	lot specific
Purification:	>95%, Protein G purified
Conjugation:	Unconjugated
Storage:	Upon receipt, store at -20°C or -80°C. Avoid repeated freeze.
Stability:	1 year from dispatch.
Database Link:	Q9Y615
Background:	Interacts (via N-terminus) with TES (via LIM domain 2). Heterodimer with TES; the heterodimer interacts with ENAH to form a heterotrimer.

[View online »](#)

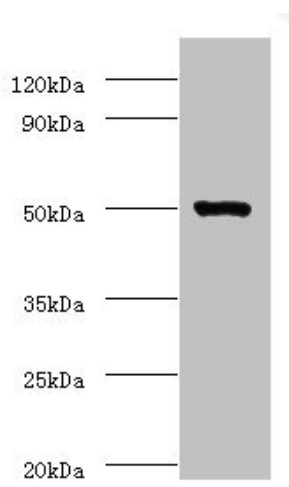
Product images:



Immunohistochemistry of paraffin-embedded human melanoma using [TA388313] at dilution of 1:100



Immunohistochemistry of paraffin-embedded human testis tissue using [TA388313] at dilution of 1:100



Western blot

All lanes: ACTL7A antibody at 2 μ g/ml + Mouse liver tissue

Secondary

Goat polyclonal to rabbit IgG at 1/10000 dilution

Predicted band size: 49 kDa

Observed band size: 49 kDa