

Product datasheet for **TA388308M**

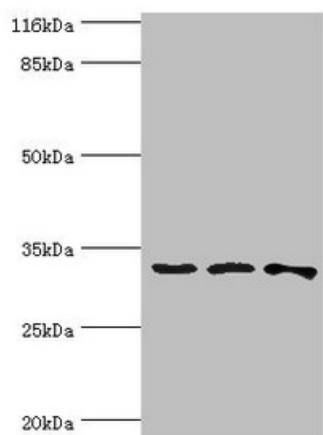
STARD10 Rabbit Polyclonal Antibody

Product data:

Product Type:	Primary Antibodies
Applications:	WB
Recommended Dilution:	Recommended dilution: WB:1:500-1:2000
Reactivity:	Mouse, Human
Host:	Rabbit
Isotype:	IgG
Clonality:	Polyclonal
Immunogen:	Recombinant Human START domain-containing protein 10 protein (1-291AA)
Formulation:	Preservative: 0.03% Proclin 300 Constituents: 50% Glycerol, 0.01M PBS, PH 7.4
Concentration:	lot specific
Purification:	>95%, Protein G purified
Conjugation:	Unconjugated
Storage:	Upon receipt, store at -20°C or -80°C. Avoid repeated freeze.
Stability:	1 year from dispatch.
Database Link:	Q9Y365
Background:	May play metabolic roles in sperm maturation or fertilization (By similarity). Phospholipid transfer protein that preferentially selects lipid species containing a palmitoyl or stearyl chain on the sn-1 and an unsaturated fatty acyl chain (18:1 or 18:2) on the sn-2 position. Able to transfer phosphatidylcholine (PC) and phosphatidylethanolamine (PE) between membranes.



[View online »](#)

Product images:

Western blot

All lanes: STARD10 antibody at 2 μ g/ml

Lane 1: 293T whole cell lysate

Lane 2: k562 whole cell lysate

Lane 3: Mouse heart tissue

Secondary

Goat polyclonal to rabbit IgG at 1/10000 dilution

Predicted band size: 33 kDa

Observed band size: 33 kDa