

Product datasheet for **TA388304M**

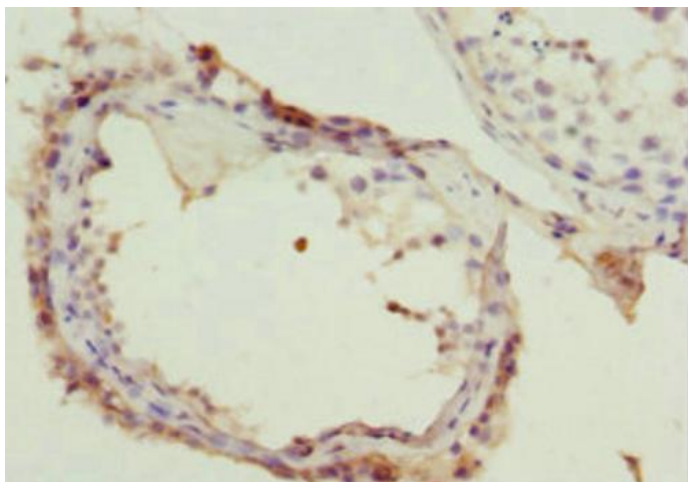
NSFL1C Rabbit Polyclonal Antibody

Product data:

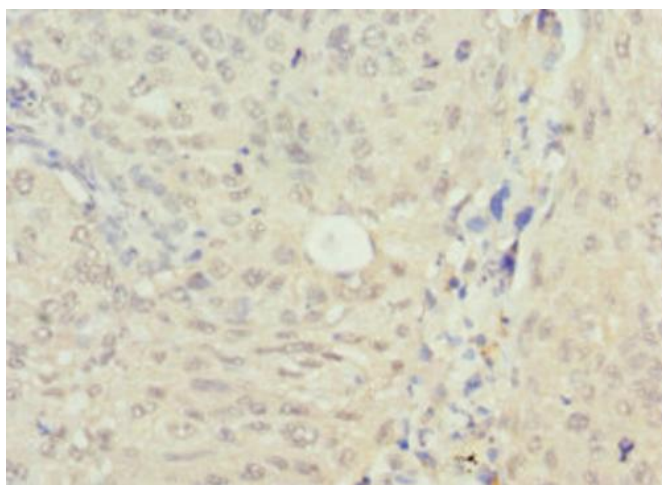
Product Type:	Primary Antibodies
Applications:	IHC, WB
Recommended Dilution:	Recommended dilution: WB:1:1000-1:5000, IHC:1:20-1:200
Reactivity:	Mouse, Rat, Human
Host:	Rabbit
Isotype:	IgG
Clonality:	Polyclonal
Immunogen:	Recombinant Human NSFL1 cofactor p47 protein (1-185AA)
Formulation:	PBS with 0.02% sodium azide, 50% glycerol, pH7.3.
Concentration:	lot specific
Purification:	Antigen Affinity Purified
Conjugation:	Unconjugated
Storage:	Upon receipt, store at -20°C or -80°C. Avoid repeated freeze.
Stability:	1 year from dispatch.
Database Link:	Q9UNZ2
Background:	Reduces the ATPase activity of VCP. Necessary for the fragmentation of Golgi stacks during mitosis and for VCP-mediated reassembly of Golgi stacks after mitosis. May play a role in VCP-mediated formation of transitional endoplasmic reticulum (tER) (By similarity). Inhibits the activity of CTSL (in vitro).

[View online »](#)

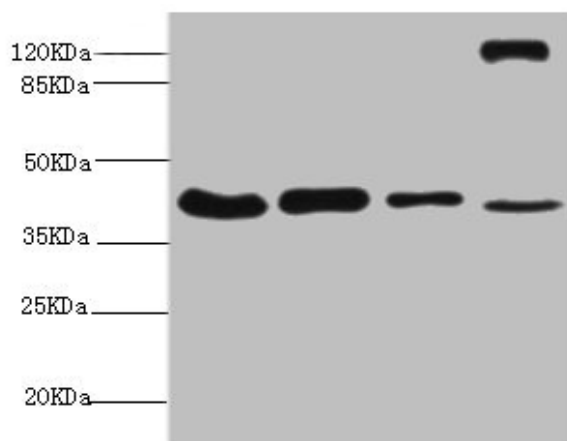
Product images:



Immunohistochemistry of paraffin-embedded human testis tissue using [TA388304] at dilution of 1:100



Immunohistochemistry of paraffin-embedded human lung cancer using [TA388304] at dilution of 1:100



Western blot

All lanes: NSFL1C antibody at 6.3 μ g/ml

Lane 1: Mouse brain tissue

Lane 2: A431 whole cell lysate

Lane 3: 293T whole cell lysate

Lane 4: Rat liver tissue

Secondary

Goat polyclonal to rabbit IgG at 1/10000 dilution

Predicted band size: 41, 38, 29 kDa

Observed band size: 41, 130 kDa