

Product datasheet for **TA388303M**

SSR3 Rabbit Polyclonal Antibody

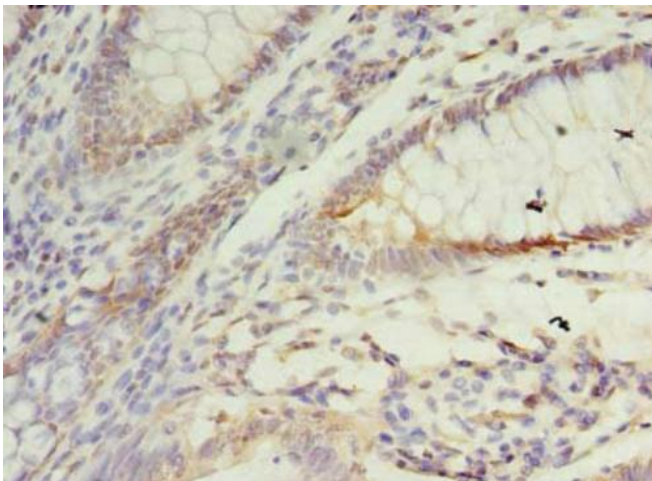
Product data:

Product Type:	Primary Antibodies
Applications:	IF, IHC, WB
Recommended Dilution:	Recommended dilution: WB:1:500-1:2000, IHC:1:20-1:200, IF:1:50-1:200
Reactivity:	Human
Host:	Rabbit
Isotype:	IgG
Clonality:	Polyclonal
Immunogen:	Recombinant Human Translocon-associated protein subunit gamma protein (77-135AA)
Formulation:	Preservative: 0.03% Proclin 300 Constituents: 50% Glycerol, 0.01M PBS, PH 7.4
Concentration:	lot specific
Purification:	>95%, Protein G purified
Conjugation:	Unconjugated
Storage:	Upon receipt, store at -20°C or -80°C. Avoid repeated freeze.
Stability:	1 year from dispatch.
Database Link:	Q9UNL2
Background:	TRAP proteins are part of a complex whose function is to bind calcium to the ER membrane and thereby regulate the retention of ER resident proteins.

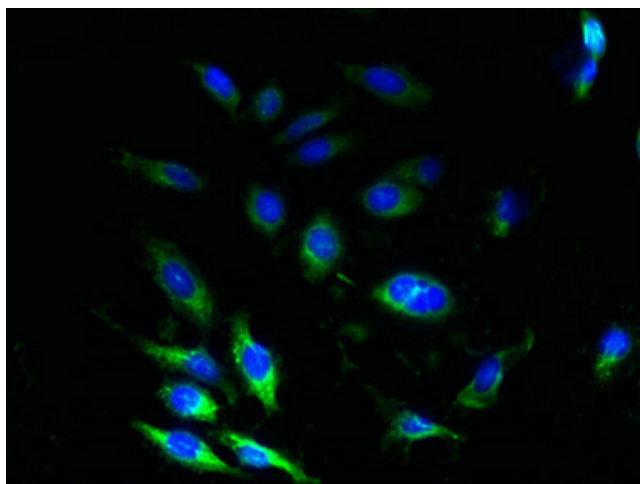


[View online »](#)

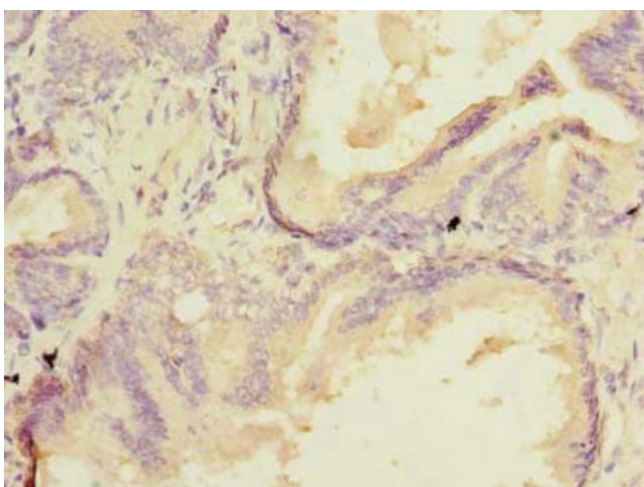
Product images:



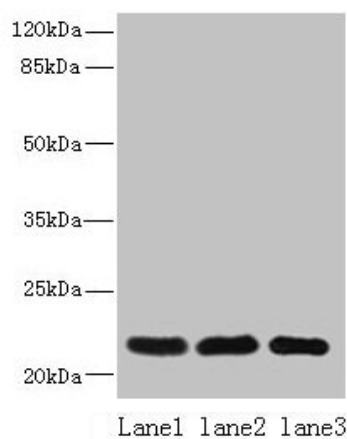
Immunohistochemistry of paraffin-embedded human colon cancer using [TA388303] at dilution of 1:100



Immunofluorescent analysis of HeLa cells using [TA388303] at dilution of 1:100 and Alexa Fluor 488-conjugated AffiniPure Goat Anti-Rabbit IgG(H+L)



Immunohistochemistry of paraffin-embedded human prostate cancer using [TA388303] at dilution of 1:100



Western blot

All lanes: SSR3 antibody at 10µg/ml

Lane 1: HeLa whole cell lysate

Lane 2: U87 whole cell lysate

Lane 3: A431 whole cell lysate

Secondary

Goat polyclonal to rabbit IgG at 1/10000 dilution

Predicted band size: 22, 23 kDa

Observed band size: 22 kDa