

Product datasheet for **TA388297M**

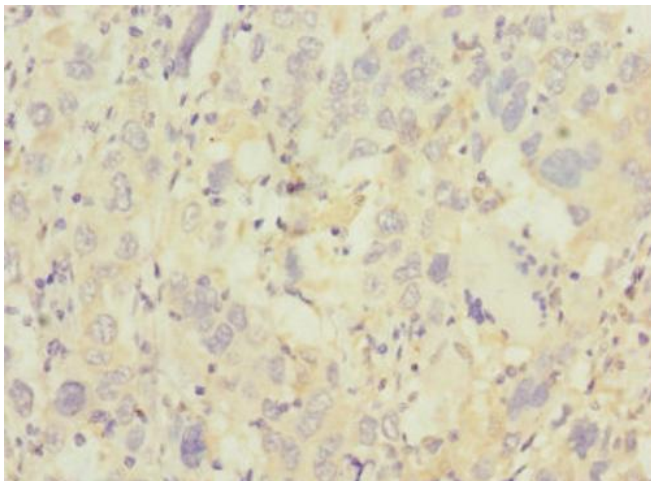
TRHDE Rabbit Polyclonal Antibody

Product data:

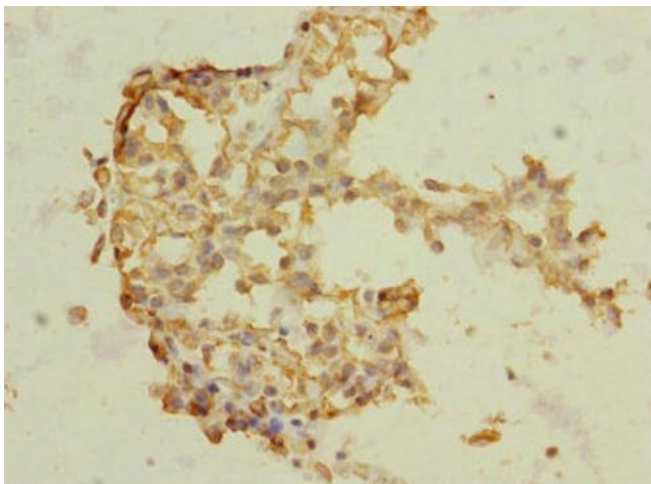
Product Type:	Primary Antibodies
Applications:	IHC, WB
Recommended Dilution:	Recommended dilution: WB:1:1000-1:5000, IHC:1:20-1:200
Reactivity:	Mouse, Rat, Human
Host:	Rabbit
Isotype:	IgG
Clonality:	Polyclonal
Immunogen:	Recombinant Human Thyrotropin-releasing hormone-degrading ectoenzyme protein (62-200AA)
Formulation:	PBS with 0.02% sodium azide, 50% glycerol, pH7.3.
Concentration:	lot specific
Purification:	Antigen Affinity Purified
Conjugation:	Unconjugated
Storage:	Upon receipt, store at -20°C or -80°C. Avoid repeated freeze.
Stability:	1 year from dispatch.
Database Link:	Q9UKU6
Background:	Specific inactivation of TRH after its release.



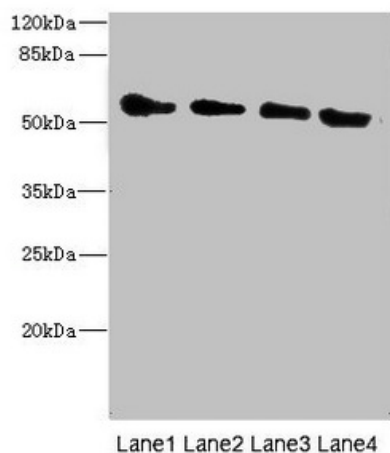
[View online »](#)

Product images:

Immunohistochemistry of paraffin-embedded human liver cancer using [TA388297] at dilution of 1:100



Immunohistochemistry of paraffin-embedded human breast cancer using [TA388297] at dilution of 1:100



Western blot

All lanes: TRHDE antibody at 1.77 μ g/ml

Lane 1: Rat heart tissue

Lane 2: Mouse kidney tissue

Lane 3: 293T whole cell lysate

Lane 4: HepG2 whole cell lysate

Secondary

Goat polyclonal to rabbit IgG at 1/10000 dilution

Predicted band size: 117 kDa

Observed band size: 117 kDa