

## Product datasheet for **TA388296M**

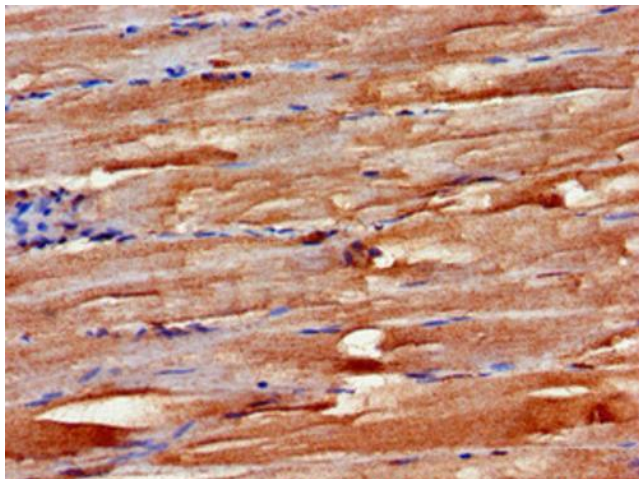
### **FBXW2 Rabbit Polyclonal Antibody**

#### **Product data:**

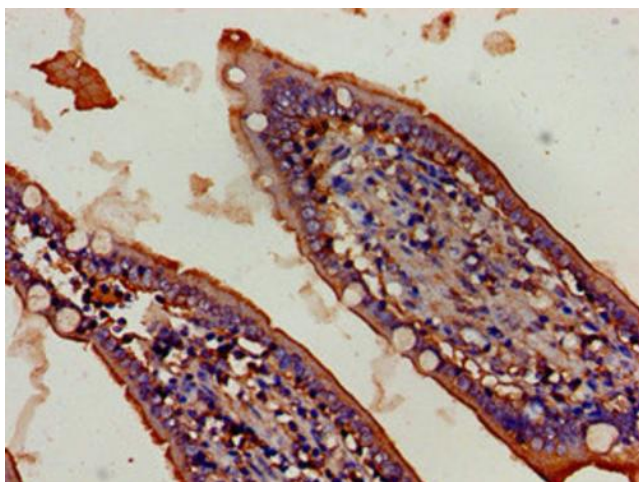
Product Type:	Primary Antibodies
Applications:	IHC, WB
Recommended Dilution:	Recommended dilution: WB:1:500-1:5000, IHC:1:20-1:200
Reactivity:	Mouse, Human
Host:	Rabbit
Isotype:	IgG
Clonality:	Polyclonal
Immunogen:	Recombinant Human F-box/WD repeat-containing protein 2 protein (72-340AA)
Formulation:	Preservative: 0.03% Proclin 300 Constituents: 50% Glycerol, 0.01M PBS, PH 7.4
Concentration:	lot specific
Purification:	>95%, Protein G purified
Conjugation:	Unconjugated
Storage:	Upon receipt, store at -20°C or -80°C. Avoid repeated freeze.
Stability:	1 year from dispatch.
Database Link:	<a href="#">Q9UKT8</a>
Background:	Substrate-recognition component of the SCF (SKP1-CUL1-F-box protein)-type E3 ubiquitin ligase complex.



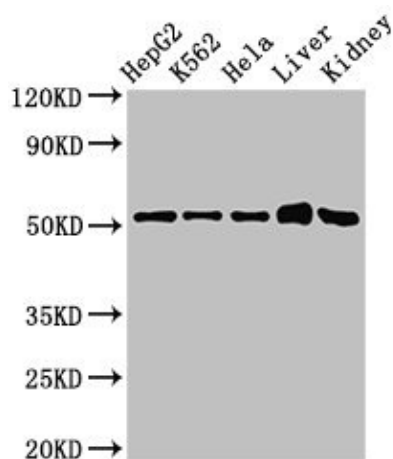
[View online »](#)

**Product images:**


Immunohistochemistry of paraffin-embedded human skeletal muscle tissue using [TA388296] at dilution of 1:100



Immunohistochemistry of paraffin-embedded human small intestine tissue using [TA388296] at dilution of 1:100



#### Western Blot

Positive WB detected in: HepG2 whole cell lysate, K562 whole cell lysate, Hela whole cell lysate, Mouse liver tissue, Mouse kidney tissue

All lanes: FBXW2 antibody at 3 $\mu$ g/ml

#### Secondary

Goat polyclonal to rabbit IgG at 1/50000 dilution

Predicted band size: 52, 45 kDa

Observed band size: 52 kDa