

Product datasheet for **TA388296**

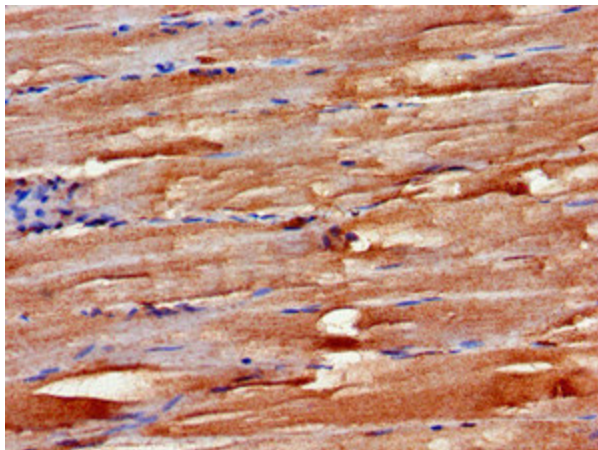
FBXW2 Rabbit Polyclonal Antibody

Product data:

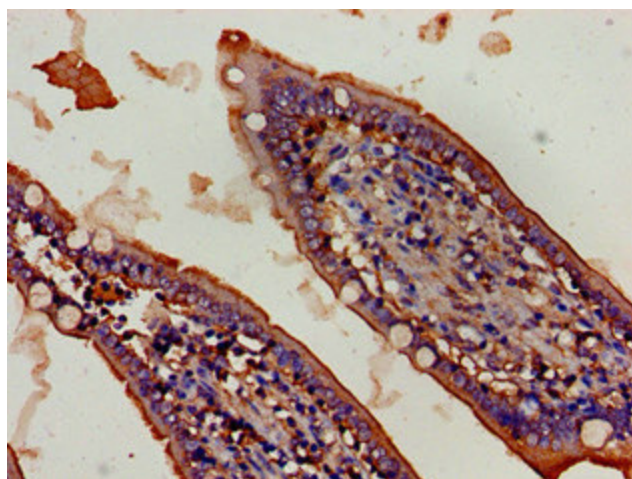
Product Type:	Primary Antibodies
Applications:	IHC, WB
Recommended Dilution:	Recommended dilution: WB:1:500-1:5000, IHC:1:20-1:200
Reactivity:	Mouse, Human
Host:	Rabbit
Isotype:	IgG
Clonality:	Polyclonal
Immunogen:	Recombinant Human F-box/WD repeat-containing protein 2 protein (72-340AA)
Formulation:	Preservative: 0.03% Proclin 300 Constituents: 50% Glycerol, 0.01M PBS, PH 7.4
Concentration:	lot specific
Purification:	>95%, Protein G purified
Conjugation:	Unconjugated
Storage:	Upon receipt, store at -20°C or -80°C. Avoid repeated freeze.
Stability:	1 year from dispatch.
Database Link:	Q9UKT8
Background:	Substrate-recognition component of the SCF (SKP1-CUL1-F-box protein)-type E3 ubiquitin ligase complex.



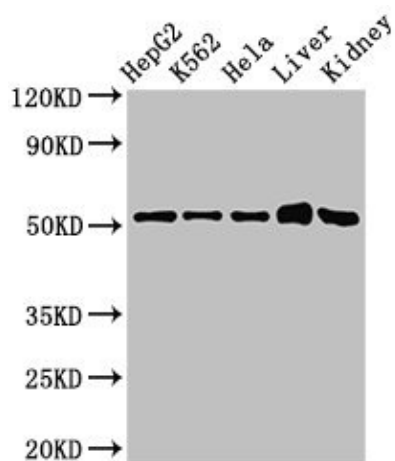
[View online »](#)

Product images:

Immunohistochemistry of paraffin-embedded human skeletal muscle tissue using TA388296 at dilution of 1:100



Immunohistochemistry of paraffin-embedded human small intestine tissue using TA388296 at dilution of 1:100

**Western Blot**

Positive WB detected in: HepG2 whole cell lysate, K562 whole cell lysate, HeLa whole cell lysate, Mouse liver tissue, Mouse kidney tissue
All lanes: FBXW2 antibody at 3 μ g/ml

Secondary

Goat polyclonal to rabbit IgG at 1/50000 dilution

Predicted band size: 52, 45 kDa

Observed band size: 52 kDa