

Product datasheet for **TA388293**

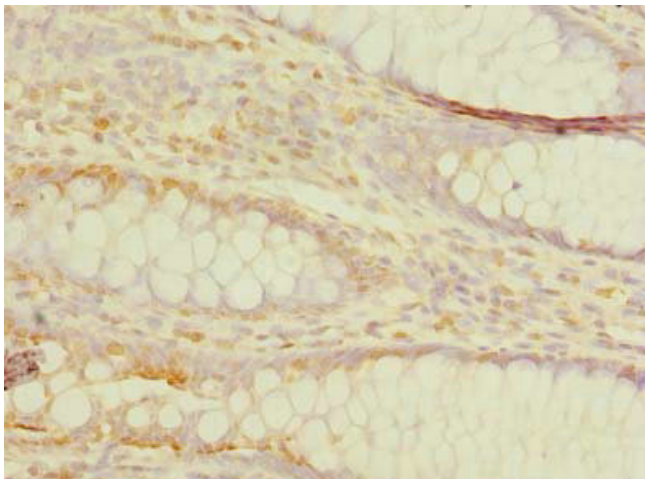
TMEM59L Rabbit Polyclonal Antibody

Product data:

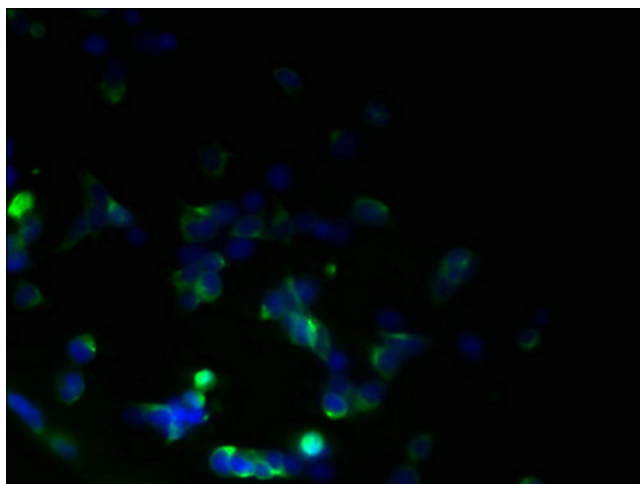
| | |
|------------------------------|--|
| Product Type: | Primary Antibodies |
| Applications: | IF, IHC, WB |
| Recommended Dilution: | Recommended dilution: WB:1:500-1:2000, IHC:1:20-1:200, IF:1:50-1:200 |
| Reactivity: | Human |
| Host: | Rabbit |
| Isotype: | IgG |
| Clonality: | Polyclonal |
| Immunogen: | Recombinant Human Transmembrane protein 59-like protein (27-267AA) |
| Formulation: | Preservative: 0.03% Proclin 300 Constituents: 50% Glycerol, 0.01M PBS, PH 7.4 |
| Concentration: | lot specific |
| Purification: | >95%, Protein G purified |
| Conjugation: | Unconjugated |
| Storage: | Upon receipt, store at -20°C or -80°C. Avoid repeated freeze. |
| Stability: | 1 year from dispatch. |
| Database Link: | Q9UK28 |
| Background: | Modulates the O-glycosylation and complex N-glycosylation steps occurring during the Golgi maturation of APP. Inhibits APP transport to the cell surface and further shedding. |



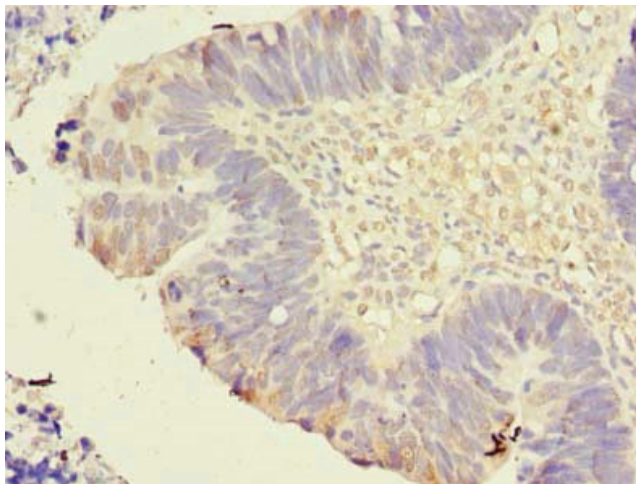
[View online »](#)

Product images:

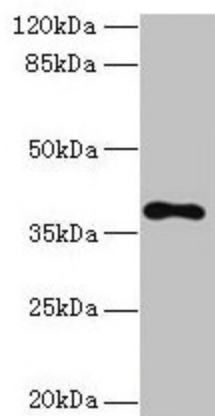
Immunohistochemistry of paraffin-embedded human colon cancer using TA388293 at dilution of 1:100



Immunofluorescent analysis of 293T cells using TA388293 at dilution of 1:100 and Alexa Fluor 488-conjugated AffiniPure Goat Anti-Rabbit IgG(H+L)



Immunohistochemistry of paraffin-embedded human ovarian cancer using TA388293 at dilution of 1:100



Western blot
All lanes: TMEM59L antibody at 3µg/ml + 293T whole cell lysate
Secondary
Goat polyclonal to rabbit IgG at 1/10000 dilution
Predicted band size: 38 kDa
Observed band size: 38 kDa