

Product datasheet for **TA388291M**

DPP7 Rabbit Polyclonal Antibody

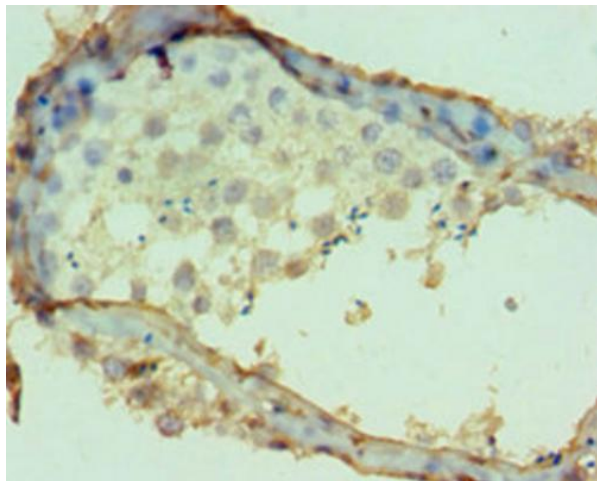
Product data:

Product Type:	Primary Antibodies
Applications:	IHC, WB
Recommended Dilution:	Recommended dilution: WB:1:500-1:2000, IHC:1:20-1:200
Reactivity:	Rat, Human
Host:	Rabbit
Isotype:	IgG
Clonality:	Polyclonal
Immunogen:	Recombinant Human Dipeptidyl peptidase 2 protein (190-410AA)
Formulation:	PBS with 0.02% sodium azide, 50% glycerol, pH7.3.
Concentration:	lot specific
Purification:	Antigen Affinity Purified
Conjugation:	Unconjugated
Storage:	Upon receipt, store at -20°C or -80°C. Avoid repeated freeze.
Stability:	1 year from dispatch.
Database Link:	Q9UHL4
Background:	Plays an important role in the degradation of some oligopeptides.

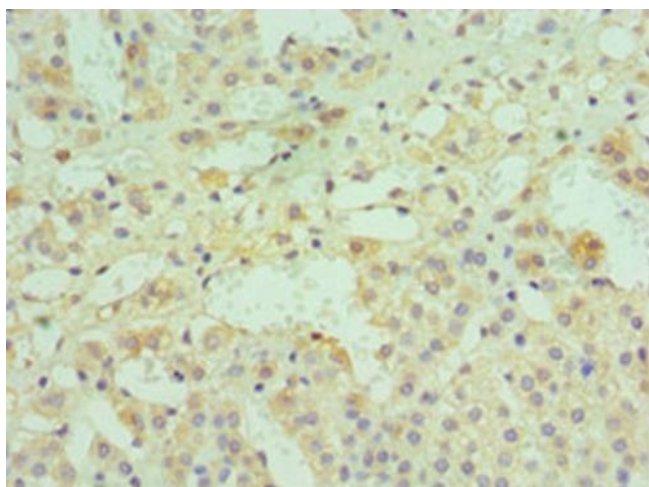


[View online »](#)

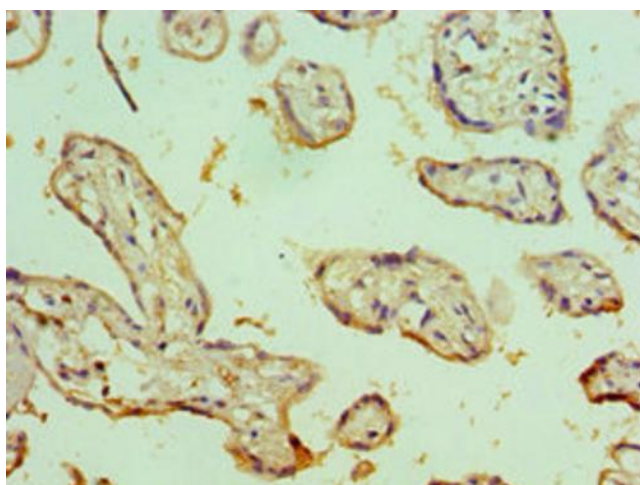
Product images:



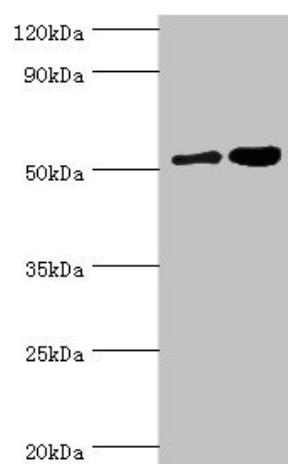
Immunohistochemistry of paraffin-embedded human testis tissue using [TA388291] at dilution of 1:100



Immunohistochemistry of paraffin-embedded human adrenal gland tissue using [TA388291] at dilution of 1:100



Immunohistochemistry of paraffin-embedded human placenta tissue using [TA388291] at dilution of 1:100



Western blot
All lanes: Dipeptidyl peptidase 2 antibody at 6µg/ml
Lane 1: K562 whole cell lysate
Lane 2: Rat brain tissue
Secondary
Goat polyclonal to rabbit IgG at 1/10000 dilution
Predicted band size: 54 kDa
Observed band size: 54 kDa