

Product datasheet for **TA388286**

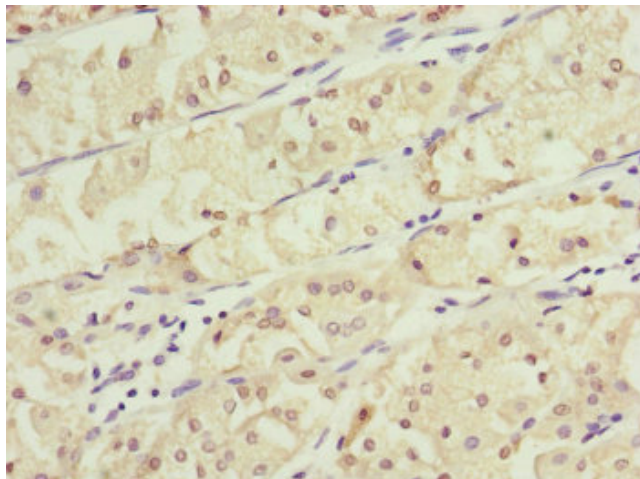
KANSL3 Rabbit Polyclonal Antibody

Product data:

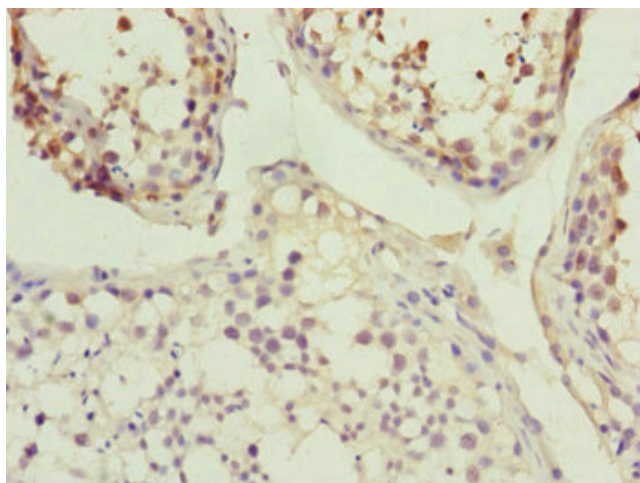
Product Type:	Primary Antibodies
Applications:	IHC, WB
Recommended Dilution:	Recommended dilution: WB:1:1000-1:5000, IHC:1:20-1:200
Reactivity:	Mouse, Human
Host:	Rabbit
Isotype:	IgG
Clonality:	Polyclonal
Immunogen:	Recombinant Human KAT8 regulatory NSL complex subunit 3 protein (1-200AA)
Formulation:	PBS with 0.02% sodium azide, 50% glycerol, pH7.3.
Concentration:	lot specific
Purification:	Antigen Affinity Purified
Conjugation:	Unconjugated
Storage:	Upon receipt, store at -20°C or -80°C. Avoid repeated freeze.
Stability:	1 year from dispatch.
Database Link:	Q9P2N6
Background:	As part of the NSL complex it is involved in acetylation of nucleosomal histone H4 on several lysine residues and therefore may be involved in the regulation of transcription.



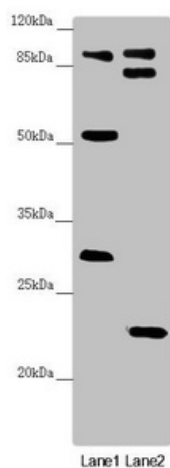
[View online »](#)

Product images:

Immunohistochemistry of paraffin-embedded human gastric cancer using TA388286 at dilution of 1:100



Immunohistochemistry of paraffin-embedded human testis tissue using TA388286 at dilution of 1:100



Western blot

All lanes: KANSL3 antibody at 1.68 $\mu\text{g}/\text{ml}$

Lane 1: U251 whole cell lysate

Lane 2: Mouse small intestine tissue

Secondary

Goat polyclonal to rabbit IgG at 1/10000 dilution

Predicted band size: 96, 84, 94, 81, 17, 59 kDa

Observed band size: 96, 83, 53, 31, 23 kDa