

## Product datasheet for **TA388285M**

### **TBC1D14 Rabbit Polyclonal Antibody**

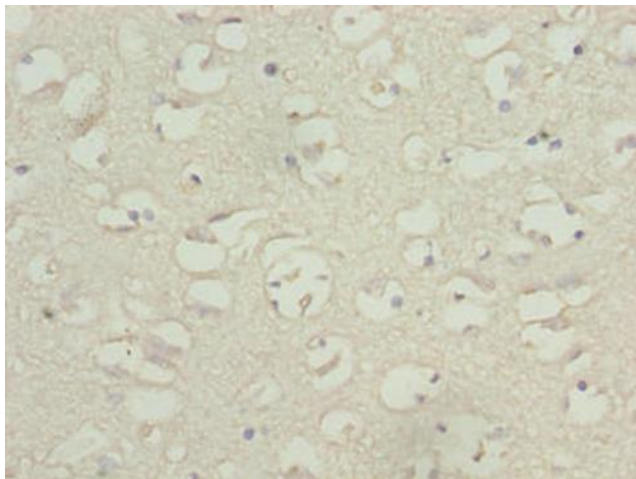
#### **Product data:**

Product Type:	Primary Antibodies
Applications:	IHC, WB
Recommended Dilution:	Recommended dilution: WB:1:1000-1:5000, IHC:1:20-1:200
Reactivity:	Human
Host:	Rabbit
Isotype:	IgG
Clonality:	Polyclonal
Immunogen:	Recombinant Human TBC1 domain family member 14 protein (136-435AA)
Formulation:	Preservative: 0.03% Proclin 300 Constituents: 50% Glycerol, 0.01M PBS, PH 7.4
Concentration:	lot specific
Purification:	>95%, Protein G purified
Conjugation:	Unconjugated
Storage:	Upon receipt, store at -20°C or -80°C. Avoid repeated freeze.
Stability:	1 year from dispatch.
Database Link:	<a href="#">Q9P2M4</a>
Background:	Negative regulator of starvation-induced autophagosome formation.

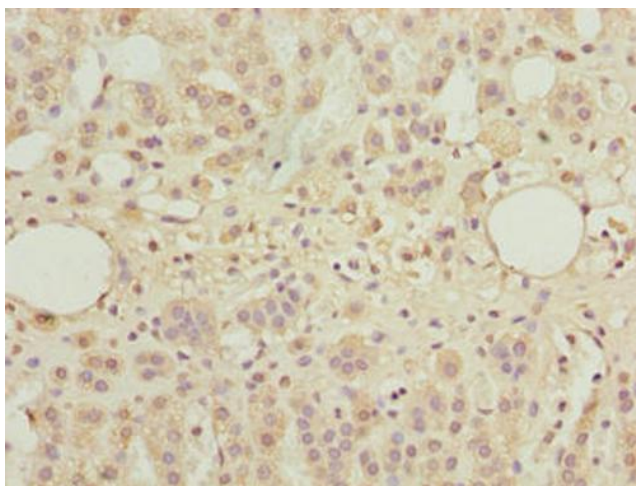


[View online »](#)

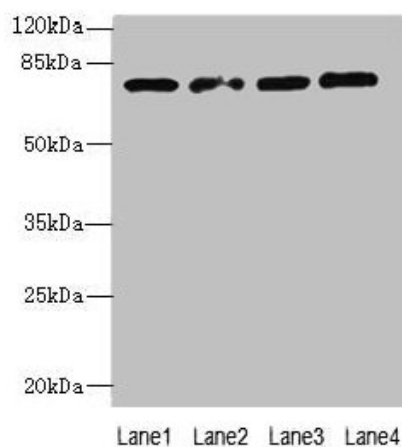
## Product images:



Immunohistochemistry of paraffin-embedded human brain tissue using [TA388285] at dilution of 1:100



Immunohistochemistry of paraffin-embedded human adrenal gland tissue using [TA388285] at dilution of 1:100



#### Western blot

All lanes: TBC1D14 antibody at 4 $\mu$ g/ml

Lane 1: K562 whole cell lysate

Lane 2: U87 whole cell lysate

Lane 3: A549 whole cell lysate

Lane 4: HepG2 whole cell lysate

#### Secondary

Goat polyclonal to rabbit IgG at 1/10000 dilution

Predicted band size: 79, 48 kDa

Observed band size: 79 kDa