

## Product datasheet for **TA388284M**

### **IL1RAPL1 Rabbit Polyclonal Antibody**

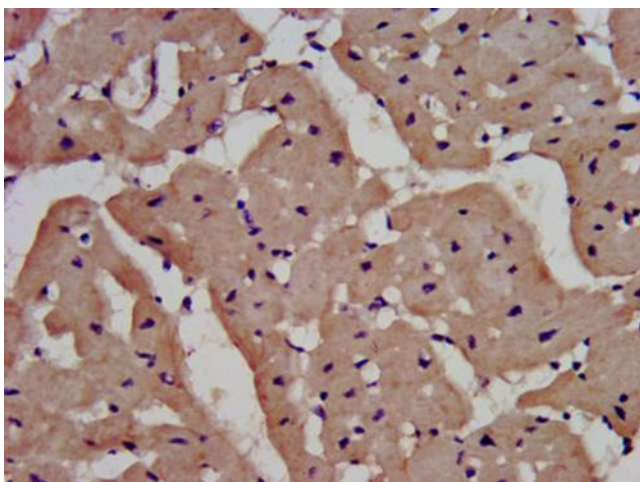
#### **Product data:**

Product Type:	Primary Antibodies
Applications:	IF, IHC, WB
Recommended Dilution:	Recommended dilution: WB:1:500-1:5000, IHC:1:200-1:500, IF:1:50-1:200
Reactivity:	Human
Host:	Rabbit
Isotype:	IgG
Clonality:	Polyclonal
Immunogen:	Recombinant Human Interleukin-1 receptor accessory protein-like 1 protein (564-679AA)
Formulation:	Preservative: 0.03% Proclin 300 Constituents: 50% Glycerol, 0.01M PBS, pH 7.4
Concentration:	lot specific
Purification:	>95%, Protein G purified
Conjugation:	Unconjugated
Storage:	Upon receipt, store at -20°C or -80°C. Avoid repeated freeze.
Stability:	1 year from dispatch.
Database Link:	<a href="#">Q9NZN1</a>
Background:	May regulate secretion and presynaptic differentiation through inhibition of the activity of N-type voltage-gated calcium channel. May activate the MAP kinase JNK. Plays a role in presynaptic and postsynaptic differentiation and dendritic spine formation in neurons.

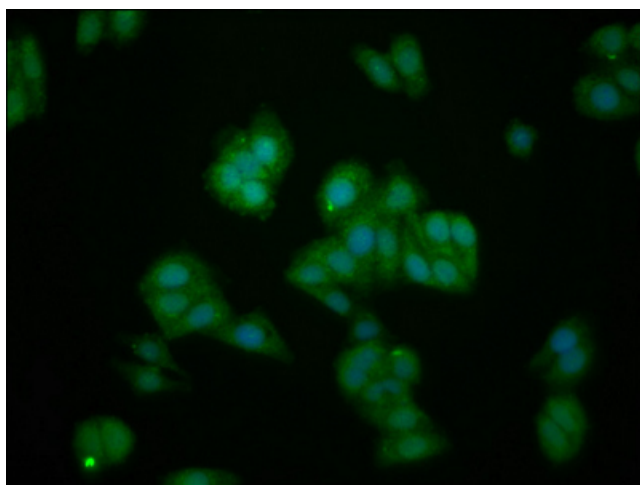


[View online »](#)

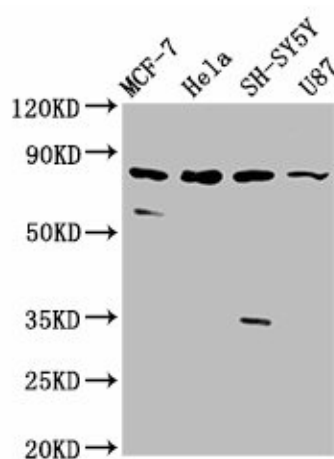
## Product images:



IHC image of [TA388284] diluted at 1:400 and staining in paraffin-embedded human heart tissue performed on a Leica Bond™ system. After dewaxing and hydration, antigen retrieval was mediated by high pressure in a citrate buffer (pH 6.0). Section was blocked with 10% normal goat serum 30min at RT. Then primary antibody (1% BSA) was incubated at 4°C overnight. The primary is detected by a biotinylated secondary antibody and visualized using an HRP conjugated SP system.



Immunofluorescence staining of HepG2 cells with [TA388284] at 1:133, counter-stained with DAPI. The cells were fixed in 4% formaldehyde, permeabilized using 0.2% Triton X-100 and blocked in 10% normal Goat Serum. The cells were then incubated with the antibody overnight at 4°C. The secondary antibody was Alexa Fluor 488-conjugated AffiniPure Goat Anti-Rabbit IgG(H+L).



#### Western Blot

Positive WB detected in: MCF-7 whole cell lysate, HeLa whole cell lysate, SH-SY5Y whole cell lysate, U87 whole cell lysate

All lanes: IL1RAPL1 antibody at 5.4µg/ml

#### Secondary

Goat polyclonal to rabbit IgG at 1/50000 dilution

Predicted band size: 80 kDa

Observed band size: 80 kDa