

## Product datasheet for **TA388282M**

### PAQR5 Rabbit Polyclonal Antibody

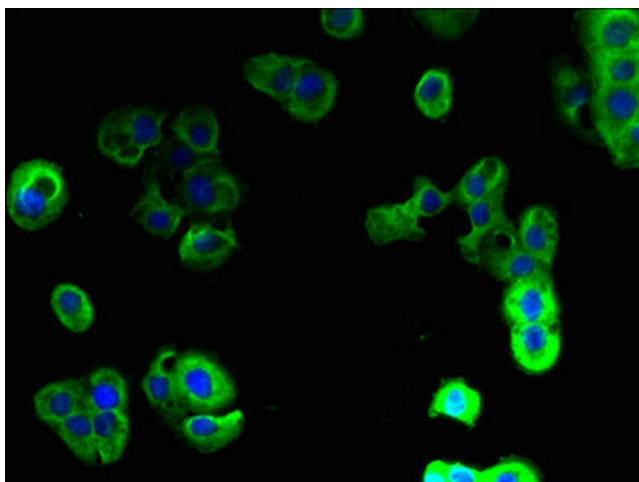
#### Product data:

Product Type:	Primary Antibodies
Applications:	IF, IHC, WB
Recommended Dilution:	Recommended dilution: WB:1:500-1:5000, IHC:1:20-1:200, IF:1:50-1:200
Reactivity:	Human
Host:	Rabbit
Isotype:	IgG
Clonality:	Polyclonal
Immunogen:	Recombinant Human Membrane progesterin receptor gamma protein (1-51AA)
Formulation:	Preservative: 0.03% Proclin 300 Constituents: 50% Glycerol, 0.01M PBS, PH 7.4
Concentration:	lot specific
Purification:	>95%, Protein G purified
Conjugation:	Unconjugated
Storage:	Upon receipt, store at -20°C or -80°C. Avoid repeated freeze.
Stability:	1 year from dispatch.
Database Link:	<a href="#">Q9NXX6</a>
Background:	Steroid membrane receptor. Binds progesterone. May be involved in oocyte maturation.

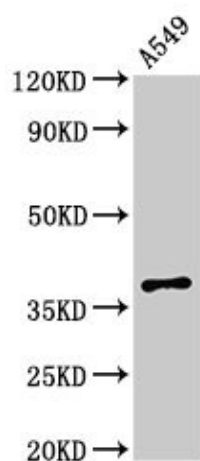


[View online »](#)

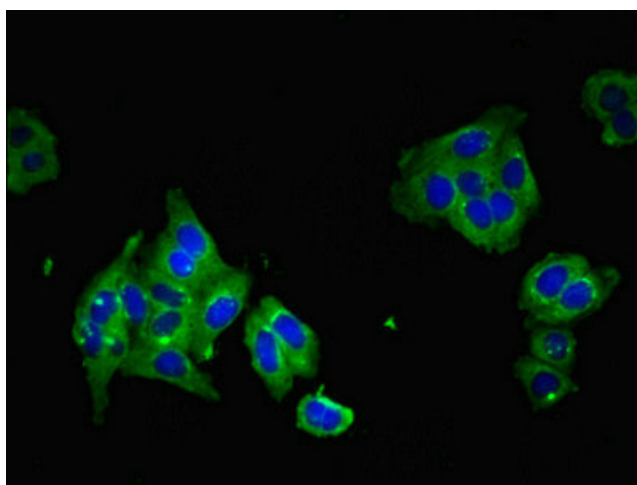
## Product images:



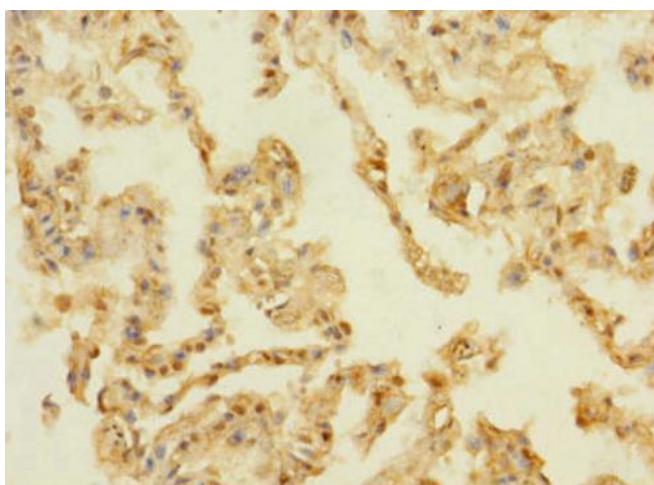
Immunofluorescent analysis of A431 cells using [TA388282] at dilution of 1:100 and Alexa Fluor 488-conjugated AffiniPure Goat Anti-Rabbit IgG(H+L)



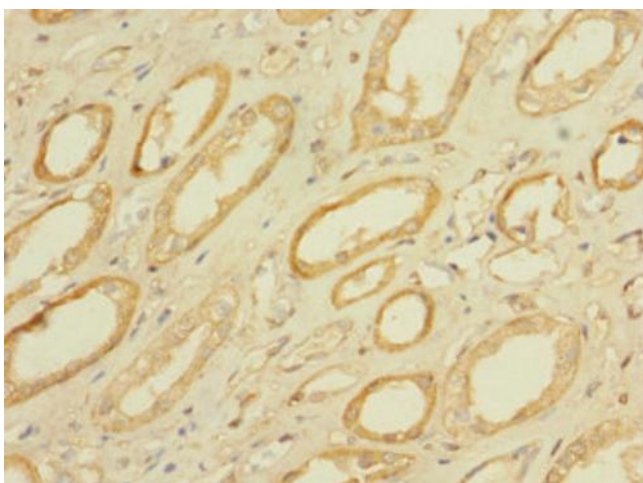
Western Blot  
Positive WB detected in: A549 whole cell lysate  
All lanes: PAQR5 antibody at 2.5µg/ml  
Secondary  
Goat polyclonal to rabbit IgG at 1/50000 dilution  
Predicted band size: 39 kDa  
Observed band size: 39 kDa



Immunofluorescent analysis of HepG2 cells using [TA388282] at dilution of 1: 100 and Alexa Fluor 488-conjugated AffiniPure Goat Anti-Rabbit IgG(H+L)



Immunohistochemistry of paraffin-embedded human lung tissue using [TA388282] at dilution of 1:100



Immunohistochemistry of paraffin-embedded human kidney tissue using [TA388282] at dilution of 1:100