

Product datasheet for **TA388281M**

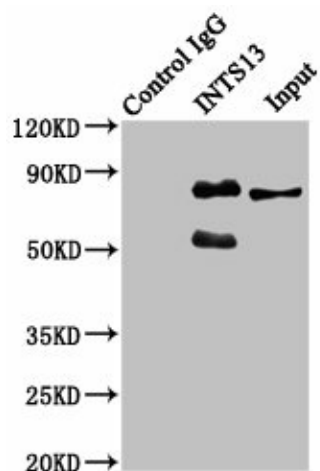
INTS13 Rabbit Polyclonal Antibody

Product data:

Product Type:	Primary Antibodies
Applications:	IP, WB
Recommended Dilution:	Recommended dilution: WB:1:500-1:5000, IP:1:200-1:2000
Reactivity:	Human
Host:	Rabbit
Isotype:	IgG
Clonality:	Polyclonal
Immunogen:	Recombinant Human Integrator complex subunit 13 protein (573-706AA)
Formulation:	Preservative: 0.03% Proclin 300 Constituents: 50% Glycerol, 0.01M PBS, pH 7.4
Concentration:	lot specific
Purification:	>95%, Protein G purified
Conjugation:	Unconjugated
Storage:	Upon receipt, store at -20°C or -80°C. Avoid repeated freeze.
Stability:	1 year from dispatch.
Database Link:	Q9NVM9
Background:	Crucial regulator of the mitotic cell cycle and development. At prophase, required for dynein anchoring to the nuclear envelope important for proper centrosome-nucleus coupling. At G2/M phase, may be required for proper spindle formation and execution of cytokinesis. Probable component of the Integrator (INT) complex, a complex involved in the small nuclear RNAs (snRNA) U1 and U2 transcription and in their 3'-box-dependent processing (PubMed:23904267).

[View online »](#)

Product images:

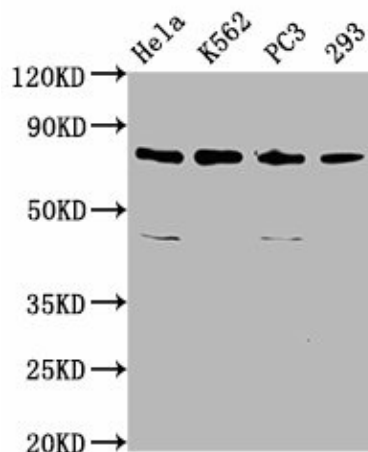


Immunoprecipitating INTS13 in HeLa whole cell lysate

Lane 1: Rabbit control IgG instead of [TA388281] in HeLa whole cell lysate. For western blotting, a HRP-conjugated Protein G antibody was used as the secondary antibody (1/2000)

Lane 2: [TA388281] (6 μ g) + HeLa whole cell lysate (500 μ g)

Lane 3: HeLa whole cell lysate (20 μ g)



Western Blot

Positive WB detected in: HeLa whole cell lysate, K562 whole cell lysate, PC-3 whole cell lysate, 293 whole cell lysate

All lanes: INTS13 antibody at 3.4 μ g/ml

Secondary

Goat polyclonal to rabbit IgG at 1/50000 dilution

Predicted band size: 81, 69 kDa

Observed band size: 81 kDa