

## Product datasheet for **TA388275**

### **RAB6B Rabbit Polyclonal Antibody**

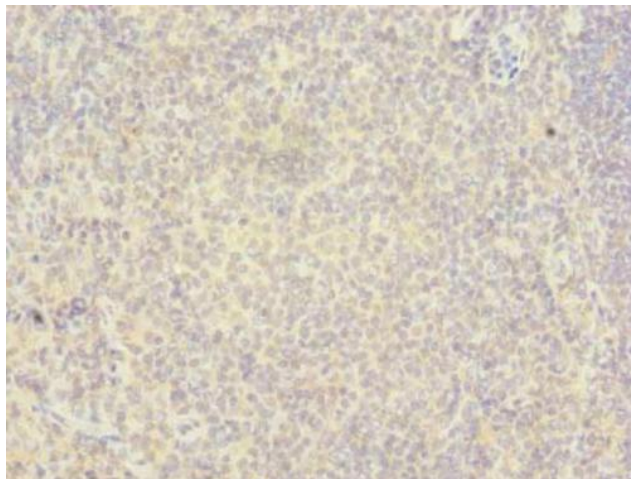
#### **Product data:**

Product Type:	Primary Antibodies
Applications:	IHC, WB
Recommended Dilution:	Recommended dilution: WB:1:500-1:2000, IHC:1:20-1:200
Reactivity:	Mouse, Human
Host:	Rabbit
Isotype:	IgG
Clonality:	Polyclonal
Immunogen:	Recombinant Human Ras-related protein Rab-6B protein (2-208AA)
Formulation:	Preservative: 0.03% Proclin 300 Constituents: 50% Glycerol, 0.01M PBS, PH 7.4
Concentration:	lot specific
Purification:	>95%, Protein G purified
Conjugation:	Unconjugated
Storage:	Upon receipt, store at -20°C or -80°C. Avoid repeated freeze.
Stability:	1 year from dispatch.
Database Link:	<a href="#">Q9NRW1</a>
Background:	Seems to have a role in retrograde membrane traffic at the level of the Golgi complex. May function in retrograde transport in neuronal cells.

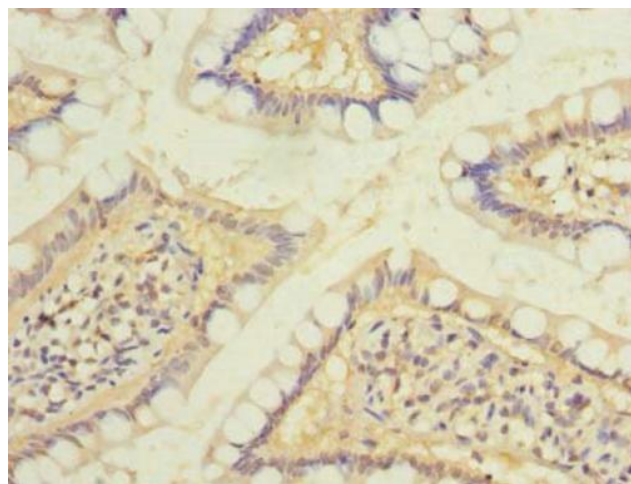


[View online »](#)

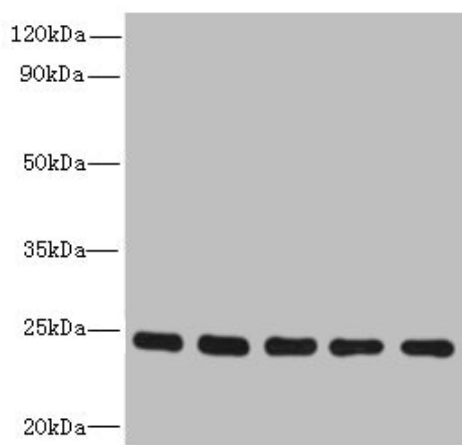
## Product images:



Immunohistochemistry of paraffin-embedded human tonsil tissue using TA388275 at dilution of 1:100



Immunohistochemistry of paraffin-embedded human small intestine tissue using TA388275 at dilution of 1:100



Western blot

All lanes: RAB6B antibody at 5 $\mu$ g/ml

Lane 1: Mouse brain tissue

Lane 2: U251 whole cell lysate

Lane 3: MCF-7 whole cell lysate

Lane 4: A549 whole cell lysate

Lane 5: K562 whole cell lysate

Secondary

Goat polyclonal to rabbit IgG at 1/10000 dilution

Predicted band size: 24, 23 kDa

Observed band size: 24 kDa