

## Product datasheet for **TA388259M**

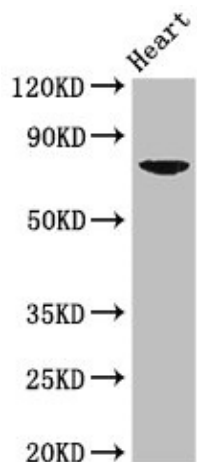
### PRDM13 Rabbit Polyclonal Antibody

#### Product data:

Product Type:	Primary Antibodies
Applications:	WB
Recommended Dilution:	Recommended dilution: WB:1:500-1:5000
Reactivity:	Mouse, Human
Host:	Rabbit
Isotype:	IgG
Clonality:	Polyclonal
Immunogen:	Recombinant Human PR domain zinc finger protein 13 protein (2-255AA)
Formulation:	Preservative: 0.03% Proclin 300 Constituents: 50% Glycerol, 0.01M PBS, pH 7.4
Concentration:	lot specific
Purification:	>95%, Protein G purified
Conjugation:	Unconjugated
Storage:	Upon receipt, store at -20°C or -80°C. Avoid repeated freeze.
Stability:	1 year from dispatch.
Database Link:	<a href="#">Q9H4Q3</a>
Background:	May be involved in transcriptional regulation.



[View online »](#)

**Product images:**

Western Blot

Positive WB detected in: Mouse heart tissue

All lanes: PRDM13 antibody at 2.7µg/ml

Secondary

Goat polyclonal to rabbit IgG at 1/50000 dilution

Predicted band size: 74 kDa

Observed band size: 74 kDa