

## Product datasheet for **TA388257M**

### CXXC4 Rabbit Polyclonal Antibody

#### Product data:

Product Type:	Primary Antibodies
Applications:	IHC, WB
Recommended Dilution:	Recommended dilution: WB:1:1000-1:5000, IHC:1:20-1:200
Reactivity:	Mouse, Human
Host:	Rabbit
Isotype:	IgG
Clonality:	Polyclonal
Immunogen:	Recombinant Human CXXC-type zinc finger protein 4 protein (1-198AA)
Formulation:	PBS with 0.02% sodium azide, 50% glycerol, pH7.3.
Concentration:	lot specific
Purification:	Antigen Affinity Purified
Conjugation:	Unconjugated
Storage:	Upon receipt, store at -20°C or -80°C. Avoid repeated freeze.
Stability:	1 year from dispatch.
Database Link:	<a href="#">Q9H2H0</a>
Background:	Acts as a negative regulator of the Wnt signaling pathway via its interaction with DVL1.

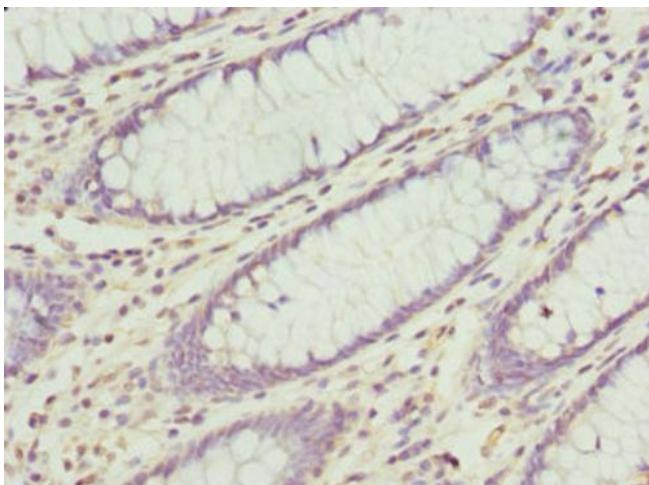


[View online »](#)

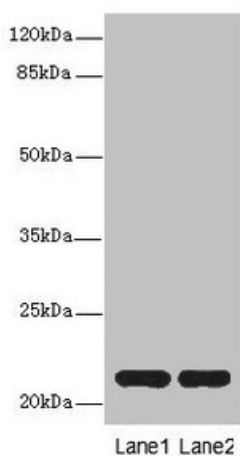
**Product images:**



Immunohistochemistry of paraffin-embedded human skeletal muscle tissue using [TA388257] at dilution of 1:100



Immunohistochemistry of paraffin-embedded human colon cancer using [TA388257] at dilution of 1:100



Western blot

All lanes: CXXC4antibody at 3.6µg/ml

Lane 1: Mouse liver tissue

Lane 2: Mouse kidney tissue

Secondary

Goat polyclonal to rabbit IgG at 1/10000 dilution

Predicted band size: 21 kDa

Observed band size: 21 kDa