

Product datasheet for **TA388255M**

ABCG8 Rabbit Polyclonal Antibody

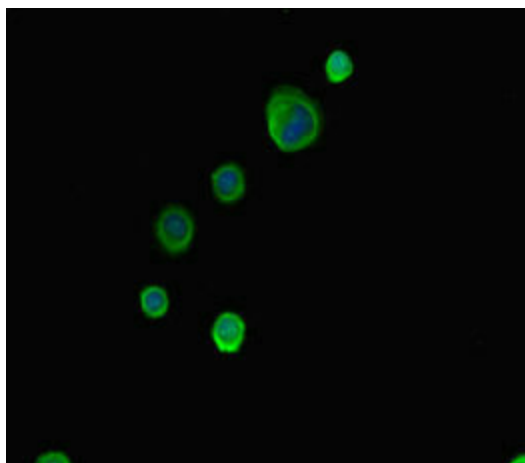
Product data:

Product Type:	Primary Antibodies
Applications:	IF, IHC, WB
Recommended Dilution:	Recommended dilution: WB:1:2000-1:10000, IHC:1:20-1:200, IF:1:50-1:200
Reactivity:	Mouse, Human
Host:	Rabbit
Isotype:	IgG
Clonality:	Polyclonal
Immunogen:	Recombinant Human ATP-binding cassette sub-family G member 8 protein (176-413AA)
Formulation:	Preservative: 0.03% Proclin 300 Constituents: 50% Glycerol, 0.01M PBS, PH 7.4
Concentration:	lot specific
Purification:	>95%, Protein G purified
Conjugation:	Unconjugated
Storage:	Upon receipt, store at -20°C or -80°C. Avoid repeated freeze.
Stability:	1 year from dispatch.
Database Link:	Q9H221
Background:	Transporter that appears to play an indispensable role in the selective transport of the dietary cholesterol in and out of the enterocytes and in the selective sterol excretion by the liver into bile.

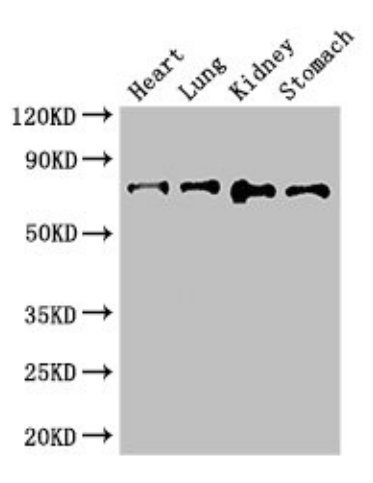


[View online »](#)

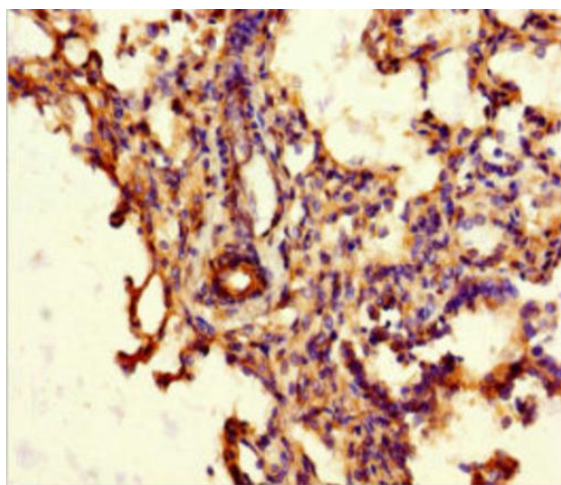
Product images:



Immunofluorescent analysis of MCF-7 cells using [TA388255] at dilution of 1:100 and Alexa Fluor 488-conjugated AffiniPure Goat Anti-Rabbit IgG(H+L)



Western Blot
Positive WB detected in: Mouse heart tissue, Mouse lung tissue, Mouse kidney tissue, Mouse stomach tissue
All lanes: ABCG8 antibody at 2.8µg/ml
Secondary
Goat polyclonal to rabbit IgG at 1/50000 dilution
Predicted band size: 76 kDa
Observed band size: 76 kDa



Immunohistochemistry of paraffin-embedded human lung tissue using [TA388255] at dilution of 1:100