

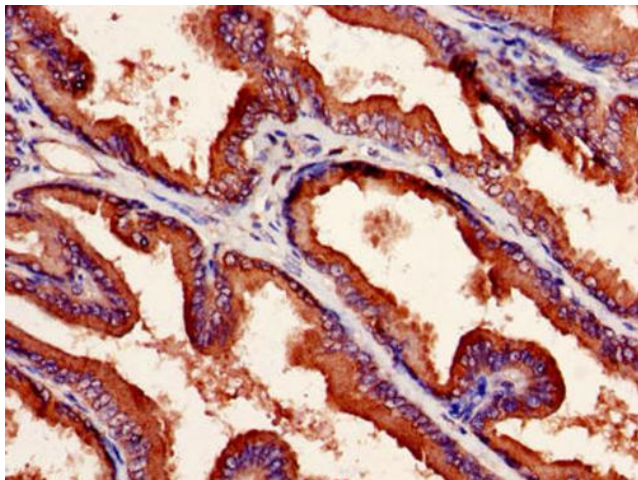
Product datasheet for **TA388253**

NXF5 Rabbit Polyclonal Antibody

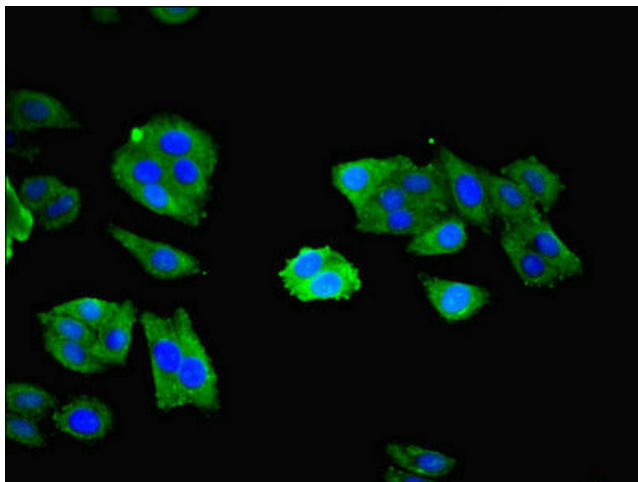
Product data:

Product Type:	Primary Antibodies
Applications:	IF, IHC, WB
Recommended Dilution:	Recommended dilution: WB:1:500–1:2000, IHC:1:20–1:200, IF:1:50–1:200
Reactivity:	Human
Host:	Rabbit
Isotype:	IgG
Clonality:	Polyclonal
Immunogen:	Recombinant Human Nuclear RNA export factor 5 protein (1–200AA)
Formulation:	Preservative: 0.03% Proclin 300 Constituents: 50% Glycerol, 0.01M PBS, PH 7.4
Concentration:	lot specific
Purification:	>95%, Protein G purified
Conjugation:	Unconjugated
Storage:	Upon receipt, store at –20°C or –80°C. Avoid repeated freeze.
Stability:	1 year from dispatch.
Database Link:	<u>Q9HIB4</u>
Background:	Could be involved in the export of mRNA from the nucleus to the cytoplasm. Could also have a role in polarized cytoplasmic transport and localization of mRNA in neurons.

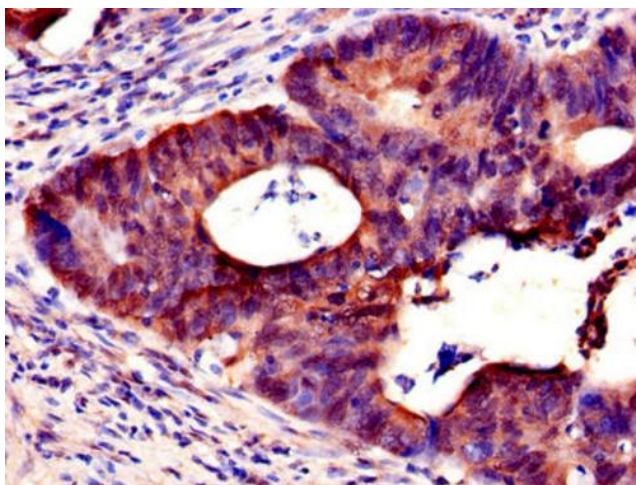


Product images:

Immunohistochemistry of paraffin-embedded human prostate cancer using TA388253 at dilution of 1:100



Immunofluorescent analysis of HepG2 cells using TA388253 at dilution of 1:100 and Alexa Fluor 488-conjugated AffiniPure Goat Anti-Rabbit IgG(H+L)



Immunohistochemistry of paraffin-embedded human colon cancer using TA388253 at dilution of 1:100



Western blot

All lanes: NXF5 antibody at 4 μ g/ml + HL60 whole cell lysate

Secondary

Goat polyclonal to rabbit IgG at 1/10000 dilution

Predicted band size: 46, 43, 20, 36, 35 kDa

Observed band size: 46 kDa