

## Product datasheet for **TA388251**

### MIS12 Rabbit Polyclonal Antibody

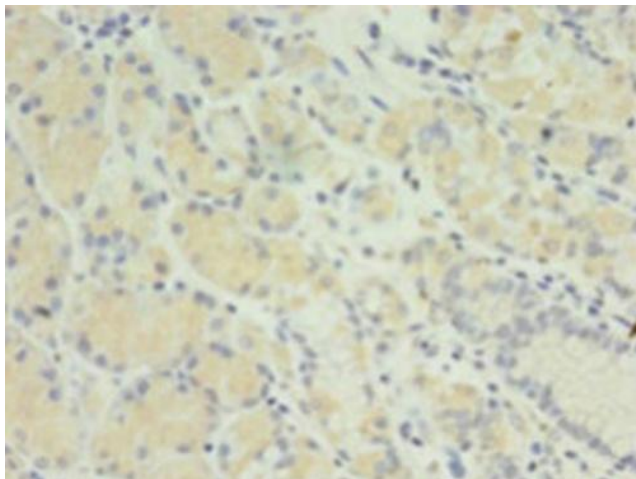
#### Product data:

Product Type:	Primary Antibodies
Applications:	IHC, WB
Recommended Dilution:	Recommended dilution: WB:1:500-1:2000, IHC:1:20-1:200
Reactivity:	Human
Host:	Rabbit
Isotype:	IgG
Clonality:	Polyclonal
Immunogen:	Recombinant Human Protein MIS12 homolog protein (1-305AA)
Formulation:	Preservative: 0.03% Proclin 300 Constituents: 50% Glycerol, 0.01M PBS, PH 7.4
Concentration:	lot specific
Purification:	>95%, Protein G purified
Conjugation:	Unconjugated
Storage:	Upon receipt, store at -20°C or -80°C. Avoid repeated freeze.
Stability:	1 year from dispatch.
Database Link:	<a href="#">Q9H081</a>
Background:	Part of the MIS12 complex which is required for normal chromosome alignment and segregation and for kinetochore formation during mitosis.

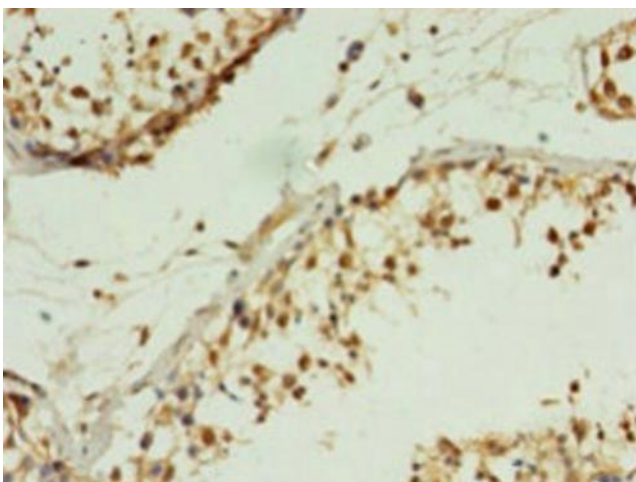


[View online »](#)

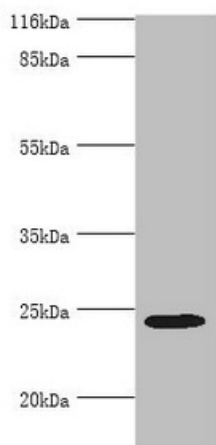
## Product images:



Immunohistochemistry of paraffin-embedded human gastric cancer using TA388251 at dilution of 1:100



Immunohistochemistry of paraffin-embedded human testis tissue using TA388251 at dilution of 1:100



Western blot

All lanes: MIS12 antibody at 2 $\mu$ g/ml + HeLa whole cell lysate

Secondary

Goat polyclonal to rabbit IgG at 1/10000 dilution

Predicted band size: 25 kDa

Observed band size: 25 kDa