

Product datasheet for **TA388248M**

TSGA10 Rabbit Polyclonal Antibody

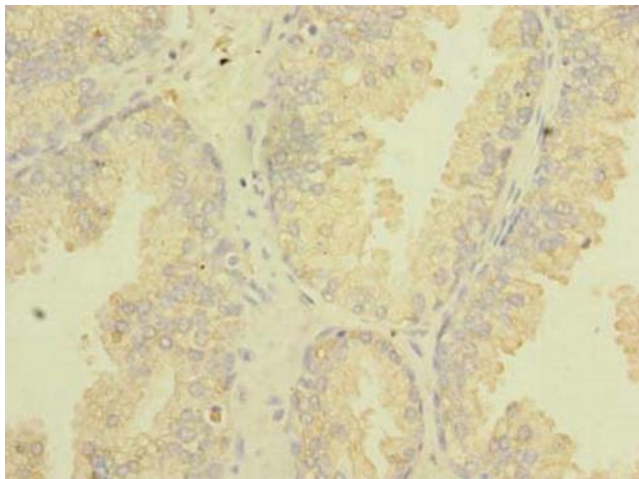
Product data:

Product Type:	Primary Antibodies
Applications:	IHC, WB
Recommended Dilution:	Recommended dilution: WB:1:500-1:2000, IHC:1:20-1:200
Reactivity:	Human
Host:	Rabbit
Isotype:	IgG
Clonality:	Polyclonal
Immunogen:	Recombinant Human Testis-specific gene 10 protein (1-200AA)
Formulation:	Preservative: 0.03% Proclin 300 Constituents: 50% Glycerol, 0.01M PBS, PH 7.4
Concentration:	lot specific
Purification:	Antigen Affinity Purified
Conjugation:	Unconjugated
Storage:	Upon receipt, store at -20°C or -80°C. Avoid repeated freeze.
Stability:	1 year from dispatch.
Database Link:	Q9BZW7
Background:	May play a role in the sperm tail fibrous sheath, a major sperm tail structure.

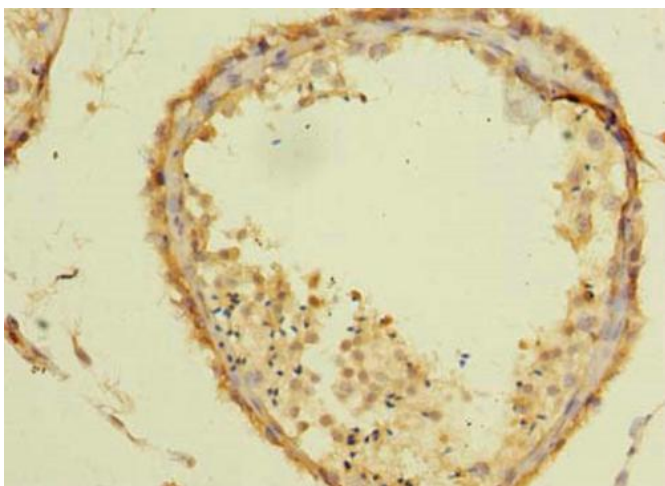


[View online »](#)

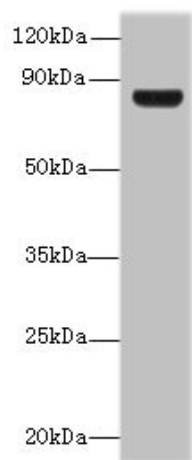
Product images:



Immunohistochemistry of paraffin-embedded human prostate cancer using [TA388248] at dilution of 1:100



Immunohistochemistry of paraffin-embedded human testis tissue using [TA388248] at dilution of 1:100



Western blot

All lanes: TSGA10 antibody at 1.5µg/ml + U251 whole cell lysate

Secondary

Goat polyclonal to rabbit IgG at 1/10000 dilution

Predicted band size: 82, 35 kDa

Observed band size: 82 kDa