

## Product datasheet for **TA388246**

### GTPBP4 Rabbit Polyclonal Antibody

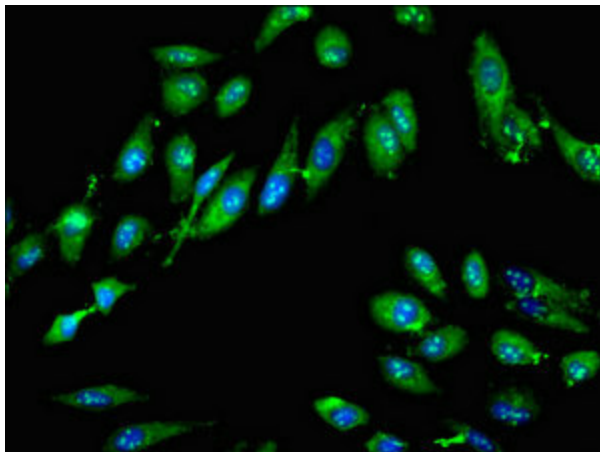
#### Product data:

Product Type:	Primary Antibodies
Applications:	IF, WB
Recommended Dilution:	Recommended dilution: WB:1:500-1:5000, IF:1:50-1:200
Reactivity:	Human
Host:	Rabbit
Isotype:	IgG
Clonality:	Polyclonal
Immunogen:	Recombinant Human Nucleolar GTP-binding protein 1 protein (347-634AA)
Formulation:	Preservative: 0.03% Proclin 300 Constituents: 50% Glycerol, 0.01M PBS, pH 7.4
Concentration:	lot specific
Purification:	>95%, Protein G purified
Conjugation:	Unconjugated
Storage:	Upon receipt, store at -20°C or -80°C. Avoid repeated freeze.
Stability:	1 year from dispatch.
Database Link:	<a href="#">Q9BZE4</a>
Background:	Involved in the biogenesis of the 60S ribosomal subunit.

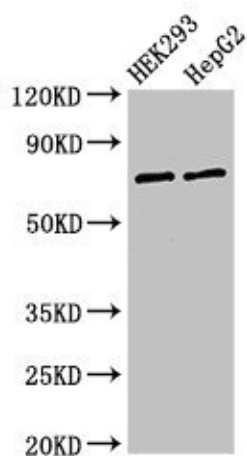


[View online »](#)

## Product images:



Immunofluorescent analysis of HeLa cells using TA388246 at dilution of 1:100 and Alexa Fluor 488-conjugated AffiniPure Goat Anti-Rabbit IgG(H+L)



Western Blot  
Positive WB detected in: HEK293 whole cell lysate, HepG2 whole cell lysate  
All lanes: GTPBP4 antibody at 3 $\mu$ g/ml  
Secondary  
Goat polyclonal to rabbit IgG at 1/50000 dilution  
Predicted band size: 74, 69, 61 kDa  
Observed band size: 74 kDa