

Product datasheet for **TA388245M**

USP26 Rabbit Polyclonal Antibody

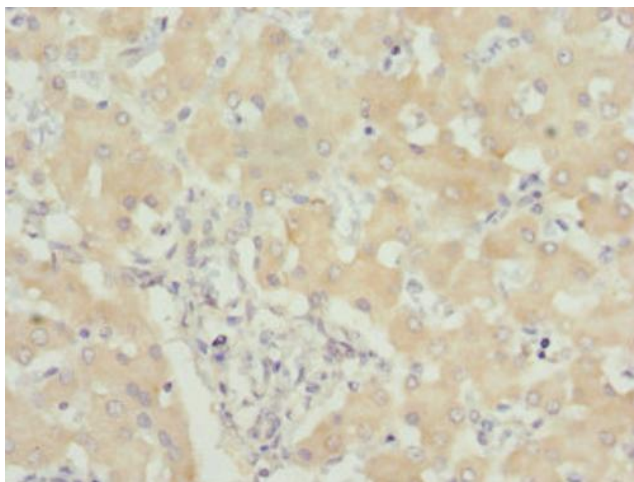
Product data:

Product Type:	Primary Antibodies
Applications:	IHC, WB
Recommended Dilution:	Recommended dilution: WB:1:1000-1:5000, IHC:1:20-1:200
Reactivity:	Mouse, Human
Host:	Rabbit
Isotype:	IgG
Clonality:	Polyclonal
Immunogen:	Recombinant Human Ubiquitin carboxyl-terminal hydrolase 26 protein (664-913AA)
Formulation:	PBS with 0.02% sodium azide, 50% glycerol, pH7.3.
Concentration:	lot specific
Purification:	Antigen Affinity Purified
Conjugation:	Unconjugated
Storage:	Upon receipt, store at -20°C or -80°C. Avoid repeated freeze.
Stability:	1 year from dispatch.
Database Link:	Q9BXU7
Background:	Involved in the ubiquitin-dependent proteolytic pathway in conjunction with the 26S proteasome (By similarity). Deubiquitinates the androgen receptor and regulates the androgen receptor signaling pathway.

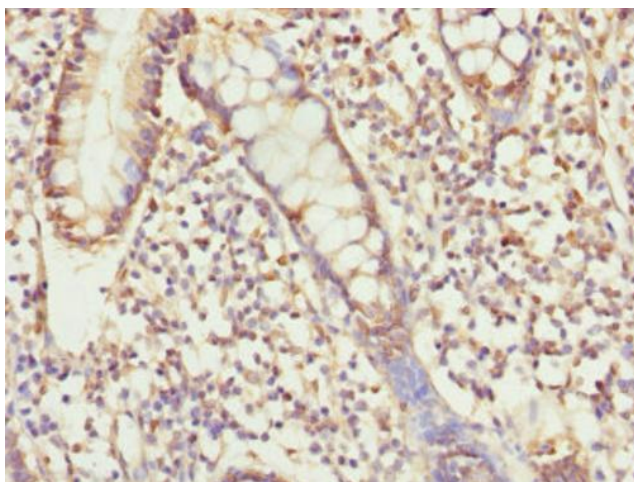


[View online »](#)

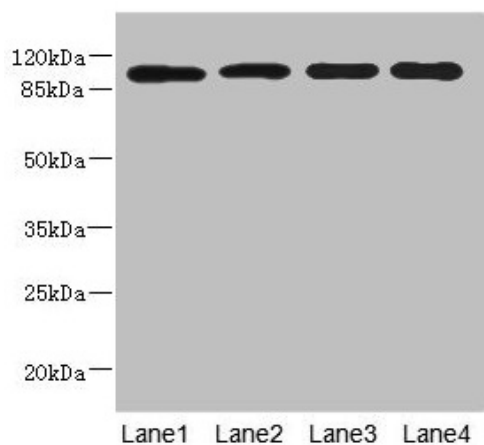
Product images:



Immunohistochemistry of paraffin-embedded human liver tissue using [TA388245] at dilution of 1:100



Immunohistochemistry of paraffin-embedded human small intestine tissue using [TA388245] at dilution of 1:100



Western blot

All lanes: USP26 antibody at 5.22µg/ml

Lane 1: Hela whole cell lysate

Lane 2: U937 whole cell lysate

Lane 3: Mouse gonadal tissue

Lane 4: Mouse liver tissue

Secondary

Goat polyclonal to rabbit IgG at 1/10000 dilution

Predicted band size: 105 kDa

Observed band size: 105 kDa