

Product datasheet for **TA388239M**

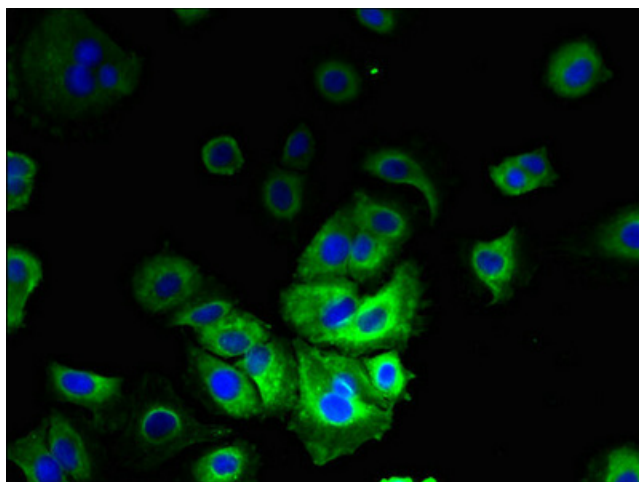
LMF2 Rabbit Polyclonal Antibody

Product data:

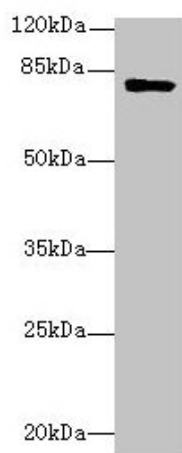
Product Type:	Primary Antibodies
Applications:	IF, WB
Recommended Dilution:	Recommended dilution: WB:1:1000-1:5000, IF:1:50-1:200
Reactivity:	Mouse, Human
Host:	Rabbit
Isotype:	IgG
Clonality:	Polyclonal
Immunogen:	Recombinant Human Lipase maturation factor 2 protein (432-636AA)
Formulation:	Preservative: 0.03% Proclin 300 Constituents: 50% Glycerol, 0.01M PBS, PH 7.4
Concentration:	lot specific
Purification:	>95%, Protein G purified
Conjugation:	Unconjugated
Storage:	Upon receipt, store at -20°C or -80°C. Avoid repeated freeze.
Stability:	1 year from dispatch.
Database Link:	Q9BU23
Background:	Involved in the maturation of specific proteins in the endoplasmic reticulum. May be required for maturation and transport of active lipoprotein lipase (LPL) through the secretory pathway.



[View online »](#)

Product images:

Immunofluorescent analysis of MCF-7 cells using [TA388239] at dilution of 1:100 and Alexa Fluor 488-conjugated AffiniPure Goat Anti-Rabbit IgG(H+L)



Western blot
All lanes: LMF2 antibody at 6µg/ml + Mouse kidney tissue
Secondary
Goat polyclonal to rabbit IgG at 1/10000 dilution
Predicted band size: 80, 77, 68 kDa
Observed band size: 80 kDa