

Product datasheet for **TA388233**

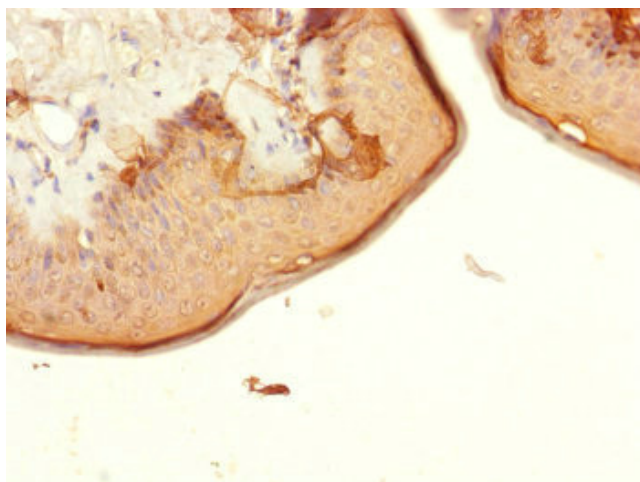
CENPK Rabbit Polyclonal Antibody

Product data:

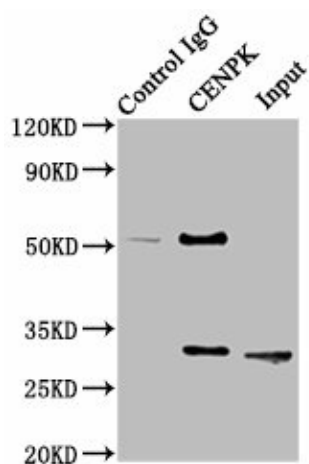
Product Type:	Primary Antibodies
Applications:	IHC, IP, WB
Recommended Dilution:	Recommended dilution: WB:1:1000-1:5000, IHC:1:20-1:200, IP:1:200-1:2000
Reactivity:	Human
Host:	Rabbit
Isotype:	IgG
Clonality:	Polyclonal
Immunogen:	Recombinant Human Centromere protein K protein (1-269AA)
Formulation:	PBS with 0.02% sodium azide, 50% glycerol, pH7.3.
Concentration:	lot specific
Purification:	Antigen Affinity Purified
Conjugation:	Unconjugated
Storage:	Upon receipt, store at -20°C or -80°C. Avoid repeated freeze.
Stability:	1 year from dispatch.
Database Link:	Q9BS16
Background:	Component of the CENPA-CAD (nucleosome distal) complex, a complex recruited to centromeres which is involved in assembly of kinetochore proteins, mitotic progression and chromosome segregation. May be involved in incorporation of newly synthesized CENPA into centromeres via its interaction with the CENPA-NAC complex. Acts in coordination with CASC5/KNL1 to recruit the NDC80 complex to the outer kinetochore.



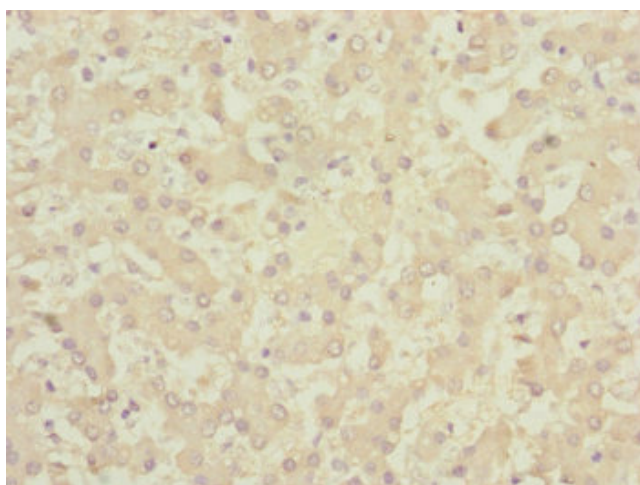
[View online »](#)

Product images:

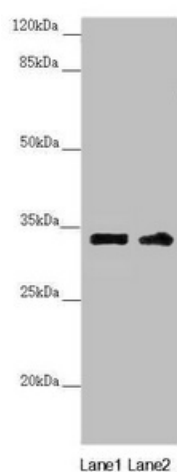
Immunohistochemistry of paraffin-embedded human skin tissue using TA388233 at dilution of 1:100



Immunoprecipitating CENPK in HeLa whole cell lysate
Lane 1: Rabbit control IgG instead of TA388233 in HeLa whole cell lysate. For western blotting, a HRP-conjugated Protein G antibody was used as the secondary antibody (1/2000)
Lane 2: TA388233 (8 μ g) + HeLa whole cell lysate (500 μ g)
Lane 3: HeLa whole cell lysate (10 μ g)



Immunohistochemistry of paraffin-embedded human liver tissue using TA388233 at dilution of 1:100



Western blot
 All lanes: CENPK antibody at 3.98µg/ml
 Lane 1: PC-3 whole cell lysate
 Lane 2: 293T whole cell lysate
 Secondary
 Goat polyclonal to rabbit IgG at 1/10000 dilution
 Predicted band size: 32 kDa
 Observed band size: 32 kDa