

Product datasheet for **TA388226**

STRBP Rabbit Polyclonal Antibody

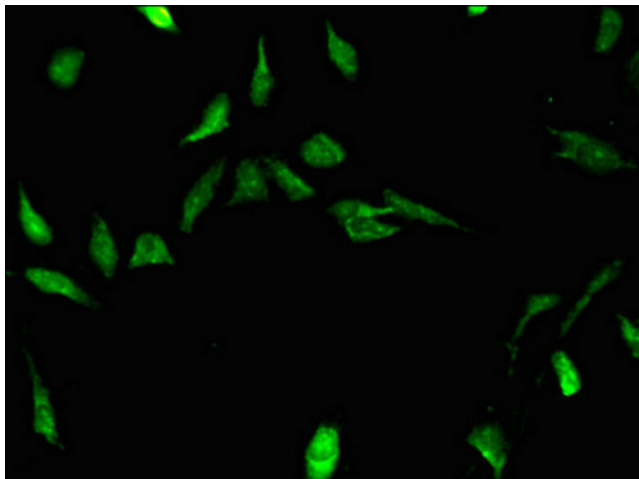
Product data:

Product Type:	Primary Antibodies
Applications:	IF, WB
Recommended Dilution:	Recommended dilution: WB:1:1000-1:5000, IF:1:50-1:200
Reactivity:	Human
Host:	Rabbit
Isotype:	IgG
Clonality:	Polyclonal
Immunogen:	Recombinant Human Spermatid perinuclear RNA-binding protein (201-500AA)
Formulation:	Preservative: 0.03% Proclin 300 Constituents: 50% Glycerol, 0.01M PBS, PH 7.4
Concentration:	lot specific
Purification:	>95%, Protein G purified
Conjugation:	Unconjugated
Storage:	Upon receipt, store at -20°C or -80°C. Avoid repeated freeze.
Stability:	1 year from dispatch.
Database Link:	Q96SI9
Background:	Involved in spermatogenesis and sperm function. Plays a role in regulation of cell growth. Binds to double-stranded DNA and RNA. Binds most efficiently to poly(I:C) RNA than to poly(dI:dC) DNA. Binds also to single-stranded poly(G) RNA. Binds non-specifically to the mRNA PRM1 3'-UTR and adenovirus VA RNA.

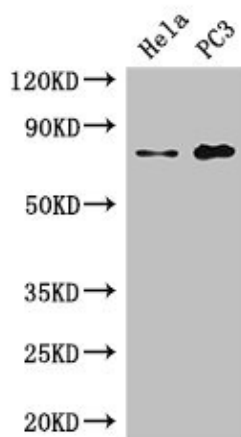


[View online »](#)

Product images:



Immunofluorescent analysis of HeLa cells using TA388226 at dilution of 1:100 and Alexa Fluor 488-conjugated AffiniPure Goat Anti-Rabbit IgG(H+L)



Western Blot
Positive WB detected in: HeLa whole cell lysate, PC-3 whole cell lysate
All lanes: STRBP antibody at 2.7 μ g/ml
Secondary
Goat polyclonal to rabbit IgG at 1/50000 dilution
Predicted band size: 74, 72 kDa
Observed band size: 74 kDa