

Product datasheet for **TA388221M**

SLC2A13 Rabbit Polyclonal Antibody

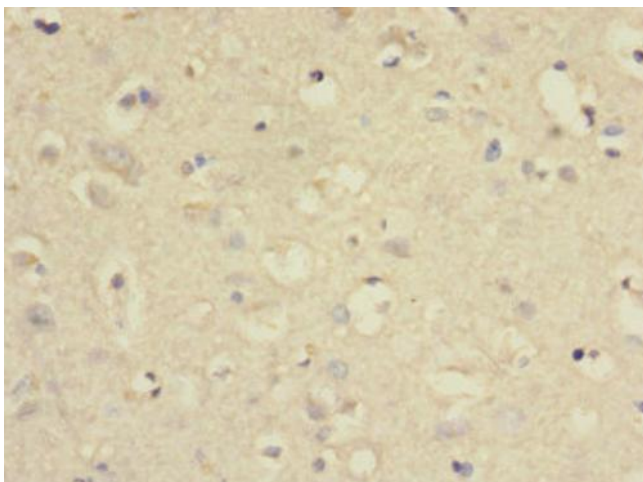
Product data:

Product Type:	Primary Antibodies
Applications:	IHC, WB
Recommended Dilution:	Recommended dilution: WB:1:1000-1:5000, IHC:1:20-1:200
Reactivity:	Human
Host:	Rabbit
Isotype:	IgG
Clonality:	Polyclonal
Immunogen:	Recombinant Human Proton myo-inositol cotransporter protein (564-648AA)
Formulation:	PBS with 0.02% sodium azide, 50% glycerol, pH7.3.
Concentration:	lot specific
Purification:	Antigen Affinity Purified
Conjugation:	Unconjugated
Storage:	Upon receipt, store at -20°C or -80°C. Avoid repeated freeze.
Stability:	1 year from dispatch.
Database Link:	Q96QE2
Background:	H(+)-myo-inositol cotransporter. Can also transport related stereoisomers.

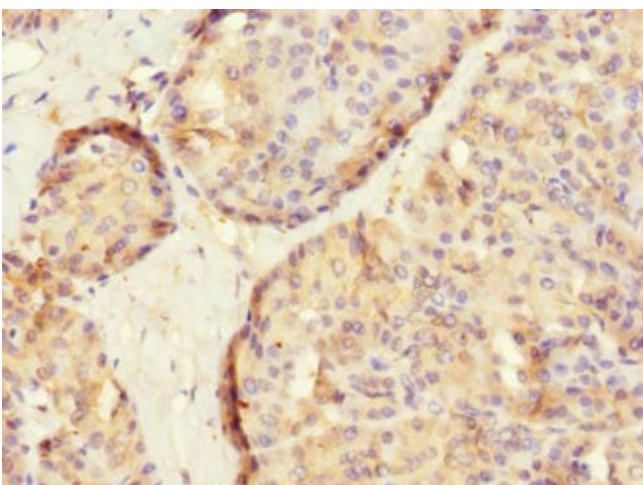


[View online »](#)

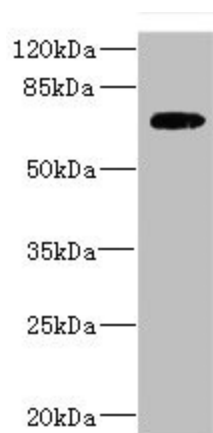
Product images:



Immunohistochemistry of paraffin-embedded human brain tissue using [TA388221] at dilution of 1:100



Immunohistochemistry of paraffin-embedded human pancreatic tissue using [TA388221] at dilution of 1:100



Western blot

All lanes: SLC2A13 antibody IgG at 2.88µg/ml +
HepG2 whole cell lysate

Secondary

Goat polyclonal to rabbit IgG at 1/10000 dilution

Predicted band size: 70 kDa

Observed band size: 70 kDa