

Product datasheet for **TA388214**

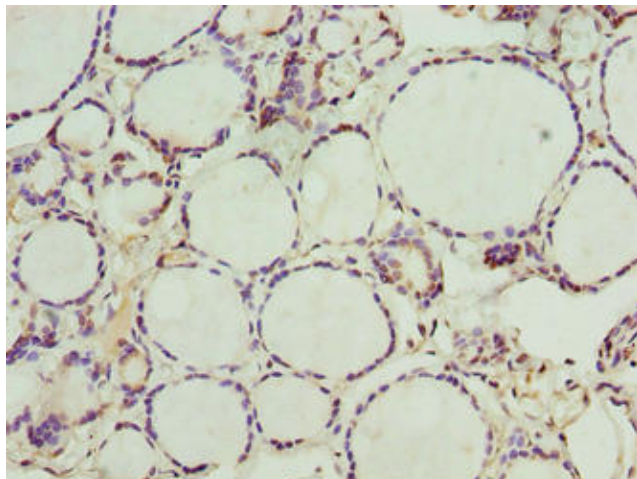
NOL4L Rabbit Polyclonal Antibody

Product data:

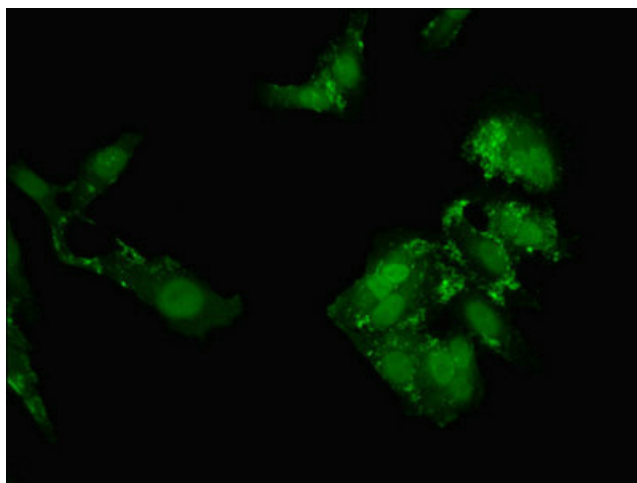
Product Type:	Primary Antibodies
Applications:	IF, IHC, WB
Recommended Dilution:	Recommended dilution: WB:1:500-1:5000, IHC:1:20-1:200, IF:1:50-1:200
Reactivity:	Human
Host:	Rabbit
Isotype:	IgG
Clonality:	Polyclonal
Immunogen:	Recombinant Human Nucleolar protein 4-like protein (101-300AA)
Formulation:	Preservative: 0.03% Proclin 300 Constituents: 50% Glycerol, 0.01M PBS, PH 7.4
Concentration:	lot specific
Purification:	>95%, Protein G purified
Conjugation:	Unconjugated
Storage:	Upon receipt, store at -20°C or -80°C. Avoid repeated freeze.
Stability:	1 year from dispatch.
Database Link:	Q96MY1
Background:	cytoplasm, nucleoplasm



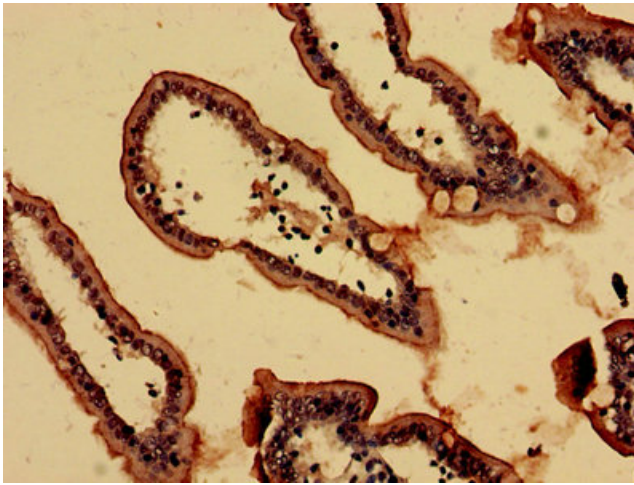
[View online »](#)

Product images:

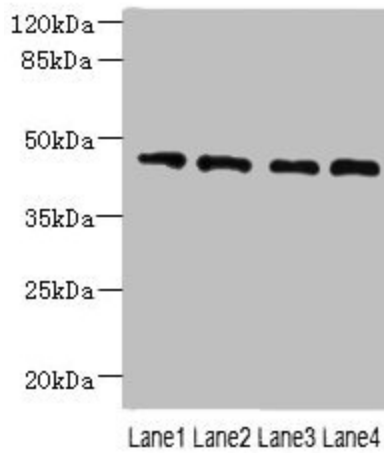
Immunohistochemistry of paraffin-embedded human thyroid tissue using TA388214 at dilution of 1:100



Immunofluorescent analysis of HeLa cells using TA388214 at dilution of 1:100 and Alexa Fluor 488-conjugated AffiniPure Goat Anti-Rabbit IgG(H+L)



Immunohistochemistry analysis of human small intestine tissue using TA388214 at dilution of 1:100



Western blot

All lanes: NOL4L antibody at 0.3µg/ml

Lane 1: PC-3 whole cell lysate

Lane 2: A549 whole cell lysate

Lane 3: HepG2 whole cell lysate

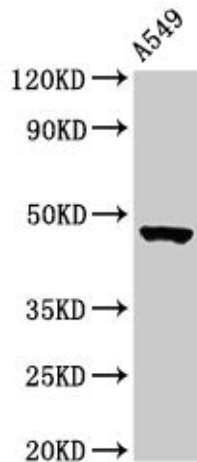
Lane 4: K562 whole cell lysate

Secondary

Goat polyclonal to rabbit IgG at 1/10000 dilution

Predicted band size: 48, 44 kDa

Observed band size: 48 kDa



Western Blot

Positive WB detected in: A549 whole cell lysate

All lanes: NOL4L antibody at 3µg/ml

Secondary

Goat polyclonal to rabbit IgG at 1/50000 dilution

Predicted band size: 48, 44 kDa

Observed band size: 48 kDa