

## Product datasheet for **TA388212M**

### **HYLS1 Rabbit Polyclonal Antibody**

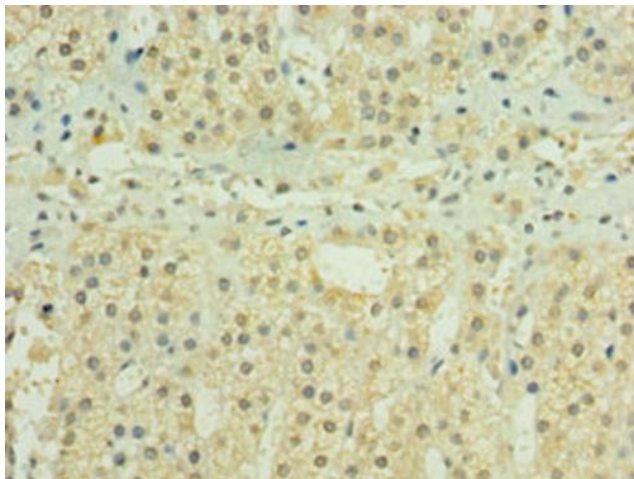
#### **Product data:**

Product Type:	Primary Antibodies
Applications:	IHC, WB
Recommended Dilution:	Recommended dilution: WB:1:500-1:2000, IHC:1:20-1:200
Reactivity:	Human
Host:	Rabbit
Isotype:	IgG
Clonality:	Polyclonal
Immunogen:	Recombinant Human Hydrolethalus syndrome protein 1 protein (70-299AA)
Formulation:	PBS with 0.02% sodium azide, 50% glycerol, pH7.3.
Concentration:	lot specific
Purification:	Antigen Affinity Purified
Conjugation:	Unconjugated
Storage:	Upon receipt, store at -20°C or -80°C. Avoid repeated freeze.
Stability:	1 year from dispatch.
Database Link:	<a href="#">Q96M11</a>
Background:	HYLS1, also named as HLS, is widely expressed in fetal tissue. Mutation of HYLS1 will cause the hydrolethalus syndrome (HLS) which is an autosomal recessive lethal malformation syndrome characterized by multiple developmental defects of fetus.

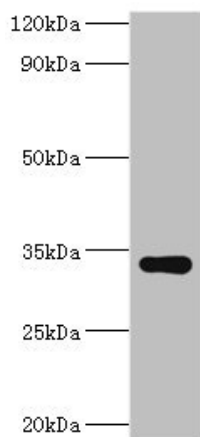


[View online »](#)

## Product images:



Immunohistochemistry of paraffin-embedded human adrenal gland tissue using [TA388212] at dilution of 1:100



Western blot  
All lanes: HYLS1 antibody at 8µg/ml + Hela whole cell lysate  
Secondary  
Goat polyclonal to rabbit IgG at 1/10000 dilution  
Predicted band size: 34 kDa  
Observed band size: 34 kDa