

Product datasheet for **TA388211**

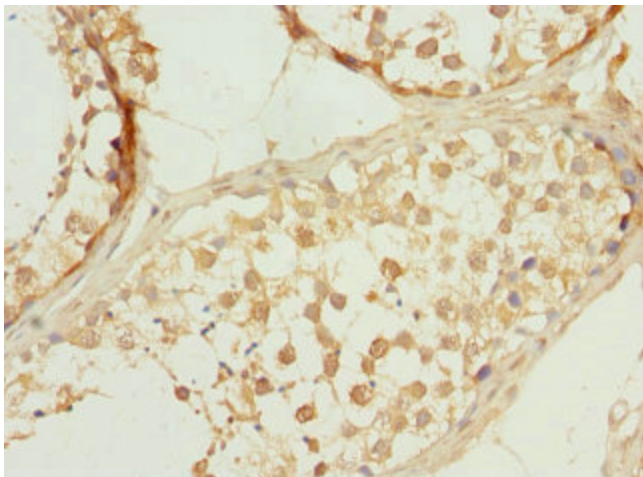
PPP3R2 Rabbit Polyclonal Antibody

Product data:

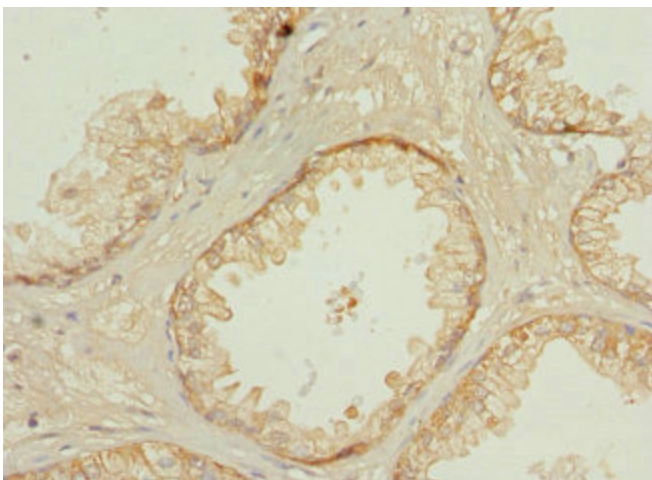
Product Type:	Primary Antibodies
Applications:	IHC, WB
Recommended Dilution:	Recommended dilution: WB:1:1000-1:5000, IHC:1:20-1:200
Reactivity:	Mouse, Human
Host:	Rabbit
Isotype:	IgG
Clonality:	Polyclonal
Immunogen:	Recombinant Human Calcineurin subunit B type 2 protein (1-170AA)
Formulation:	PBS with 0.02% sodium azide, 50% glycerol, pH7.3.
Concentration:	lot specific
Purification:	Antigen Affinity Purified
Conjugation:	Unconjugated
Storage:	Upon receipt, store at -20°C or -80°C. Avoid repeated freeze.
Stability:	1 year from dispatch.
Database Link:	Q96LZ3
Background:	Regulatory subunit of calcineurin, a calcium-dependent, calmodulin stimulated protein phosphatase. Confers calcium sensitivity (By similarity).



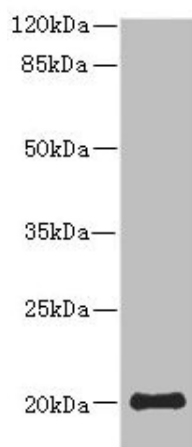
[View online »](#)

Product images:

Immunohistochemistry of paraffin-embedded human testis tissue using TA388211 at dilution of 1:100



Immunohistochemistry of paraffin-embedded human prostate cancer using TA388211 at dilution of 1:100



Western blot
All lanes: PPP3R2 antibody at 9.25 μ g/ml + Mouse
brain tissue
Secondary
Goat polyclonal to rabbit IgG at 1/10000 dilution
Predicted band size: 20 kDa
Observed band size: 20 kDa