

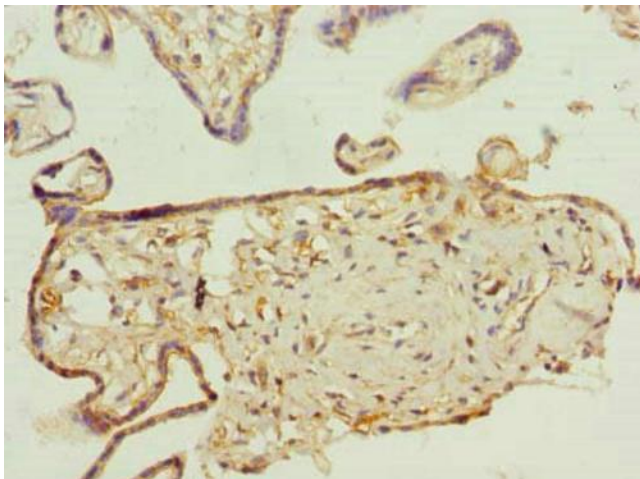
Product datasheet for **TA388209M**

PLEKHA8 Rabbit Polyclonal Antibody

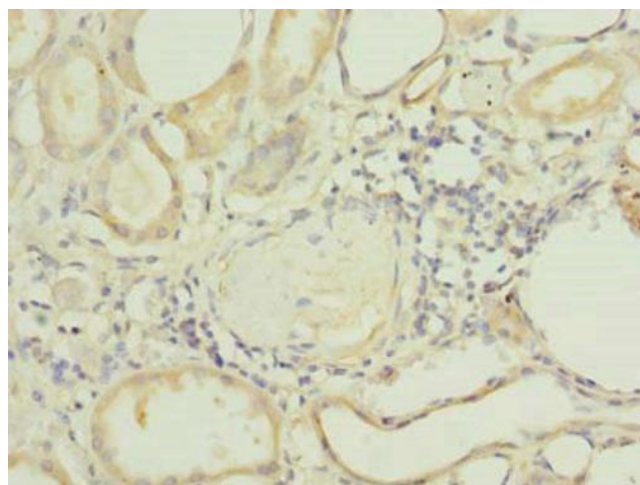
Product data:

Product Type:	Primary Antibodies
Applications:	IHC, WB
Recommended Dilution:	Recommended dilution: WB:1:500-1:2000, IHC:1:20-1:200
Reactivity:	Mouse, Human
Host:	Rabbit
Isotype:	IgG
Clonality:	Polyclonal
Immunogen:	Recombinant Human Pleckstrin homology domain-containing family A member 8 protein (1-300AA)
Formulation:	Preservative: 0.03% Proclin 300 Constituents: 50% Glycerol, 0.01M PBS, PH 7.4
Concentration:	lot specific
Purification:	Antigen Affinity Purified
Conjugation:	Unconjugated
Storage:	Upon receipt, store at -20°C or -80°C. Avoid repeated freeze.
Stability:	1 year from dispatch.
Database Link:	Q96JA3
Background:	Cargo transport protein that is required for apical transport from the Golgi complex. Transports AQP2 from the trans-Golgi network (TGN) to sites of AQP2 phosphorylation. Mediates the non-vesicular transport of glucosylceramide (GlcCer) from the trans-Golgi network (TGN) to the plasma membrane and plays a pivotal role in the synthesis of complex glycosphingolipids. Binding of both phosphatidylinositol 4-phosphate (PIP) and ARF1 are essential for the GlcCer transfer ability. Also required for primary cilium formation, possibly by being involved in the transport of raft lipids to the apical membrane, and for membrane tubulation.

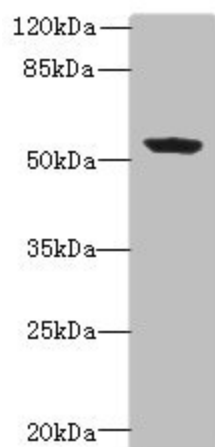

[View online »](#)

Product images:

Immunohistochemistry of paraffin-embedded human placenta tissue using [TA388209] at dilution of 1:100



Immunohistochemistry of paraffin-embedded human kidney tissue using [TA388209] at dilution of 1:100



Western blot

All lanes: PLEKHA8 antibody at 0.8µg/ml + Mouse brain tissue

Secondary

Goat polyclonal to rabbit IgG at 1/10000 dilution

Predicted band size: 59, 52, 50 kDa

Observed band size: 59 kDa