

## Product datasheet for **TA388205M**

### EEF2KMT Rabbit Polyclonal Antibody

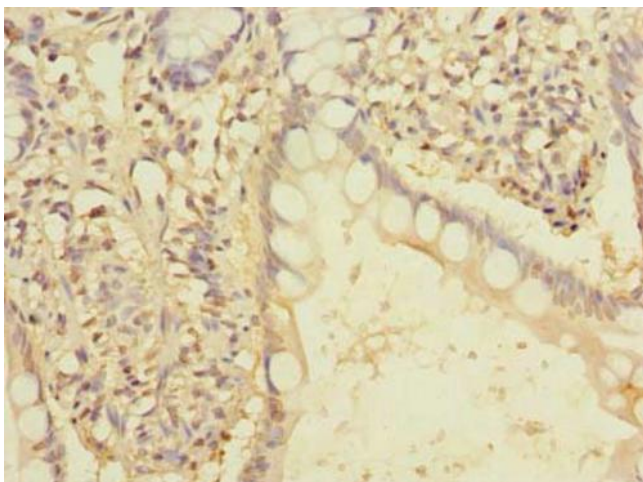
#### Product data:

|                       |   |
|-----------------------|---|
| Product Type:         | Primary Antibodies  |
| Applications:         | IHC, WB   |
| Recommended Dilution: | Recommended dilution: WB:1:500-1:2000, IHC:1:20-1:200                               |
| Reactivity:           | Human   |
| Host:                 | Rabbit  |
| Isotype:              | IgG   |
| Clonality:            | Polyclonal  |
| Immunogen:            | Recombinant Human Protein-lysine N-methyltransferase EEF2KMT protein (1-330AA)      |
| Formulation:          | Preservative: 0.03% Proclin 300<br>Constituents: 50% Glycerol, 0.01M PBS, PH 7.4    |
| Concentration:        | lot specific  |
| Purification:         | >95%, Protein G purified  |
| Conjugation:          | Unconjugated  |
| Storage:              | Upon receipt, store at -20°C or -80°C. Avoid repeated freeze.                       |
| Stability:            | 1 year from dispatch.   |
| Database Link:        | <a href="#">Q96G04</a>  |
| Background:           | Catalyzes the trimethylation of eukaryotic elongation factor 2 (EEF2) on 'Lys-525'. |

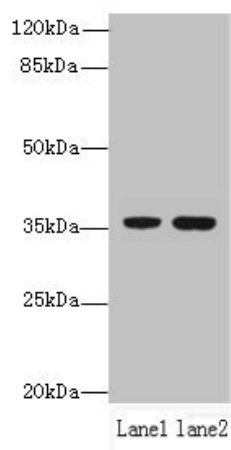


[View online »](#)

## Product images:



Immunohistochemistry of paraffin-embedded human small intestine tissue using [TA388205] at dilution of 1:100



Western blot  
All lanes: EEF2KMT antibody at 6 $\mu$ g/ml  
Lane 1: Hela whole cell lysate  
Lane 2: 293T whole cell lysate  
Secondary  
Goat polyclonal to rabbit IgG at 1/10000 dilution  
Predicted band size: 37, 34 kDa  
Observed band size: 37 kDa