

Product datasheet for **TA388205**

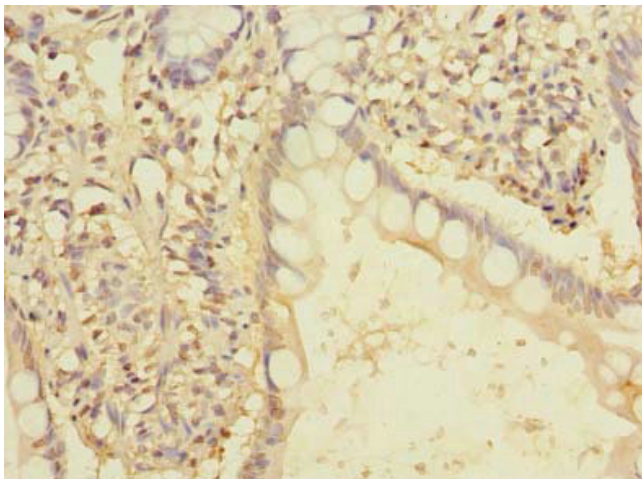
EEF2KMT Rabbit Polyclonal Antibody

Product data:

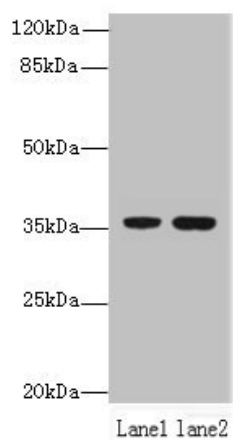
| | |
|-----------------------|---|
| Product Type: | Primary Antibodies |
| Applications: | IHC, WB |
| Recommended Dilution: | Recommended dilution: WB:1:500-1:2000, IHC:1:20-1:200 |
| Reactivity: | Human |
| Host: | Rabbit |
| Isotype: | IgG |
| Clonality: | Polyclonal |
| Immunogen: | Recombinant Human Protein-lysine N-methyltransferase EEF2KMT protein (1-330AA) |
| Formulation: | Preservative: 0.03% Proclin 300 Constituents: 50% Glycerol, 0.01M PBS, PH 7.4 |
| Concentration: | lot specific |
| Purification: | >95%, Protein G purified |
| Conjugation: | Unconjugated |
| Storage: | Upon receipt, store at -20°C or -80°C. Avoid repeated freeze. |
| Stability: | 1 year from dispatch. |
| Database Link: | Q96G04 |
| Background: | Catalyzes the trimethylation of eukaryotic elongation factor 2 (EEF2) on 'Lys-525'. |



[View online »](#)

Product images:

Immunohistochemistry of paraffin-embedded human small intestine tissue using TA388205 at dilution of 1:100



Western blot
All lanes: EEF2KMT antibody at 6 μ g/ml
Lane 1: Hela whole cell lysate
Lane 2: 293T whole cell lysate
Secondary
Goat polyclonal to rabbit IgG at 1/10000 dilution
Predicted band size: 37, 34 kDa
Observed band size: 37 kDa