

Product datasheet for **TA388201M**

L3HYPDH Rabbit Polyclonal Antibody

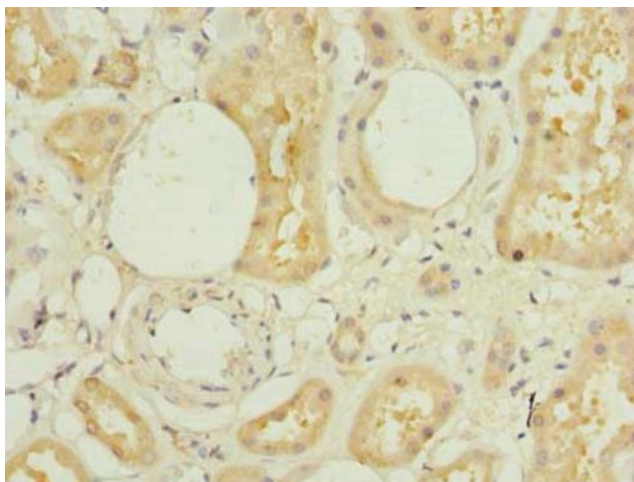
Product data:

Product Type:	Primary Antibodies
Applications:	IHC, WB
Recommended Dilution:	Recommended dilution: WB:1:500-1:2000, IHC:1:20-1:200
Reactivity:	Human
Host:	Rabbit
Isotype:	IgG
Clonality:	Polyclonal
Immunogen:	Recombinant Human Trans-3-hydroxy-L-proline dehydratase protein (13-312AA)
Formulation:	Preservative: 0.03% Proclin 300 Constituents: 50% Glycerol, 0.01M PBS, PH 7.4
Concentration:	lot specific
Purification:	>95%, Protein G purified
Conjugation:	Unconjugated
Storage:	Upon receipt, store at -20°C or -80°C. Avoid repeated freeze.
Stability:	1 year from dispatch.
Database Link:	Q96EM0
Background:	Catalyzes the dehydration of trans-3-hydroxy-L-proline to Delta(1)-pyrroline-2-carboxylate (Pyr2C). May be required to degrade trans-3-hydroxy-L-proline from the diet and originating from the degradation of proteins such as collagen-IV that contain it.

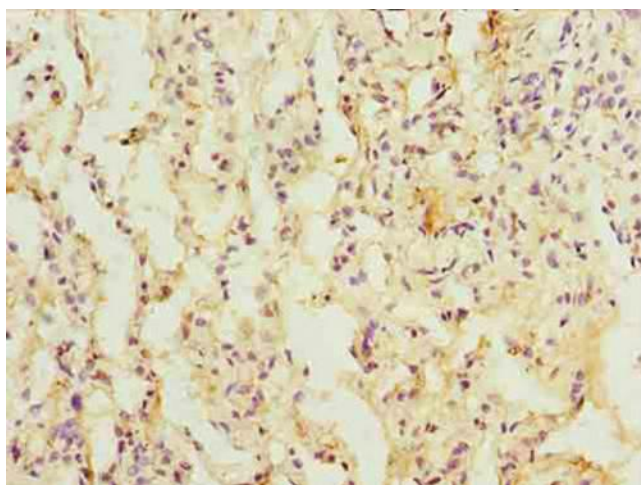


[View online »](#)

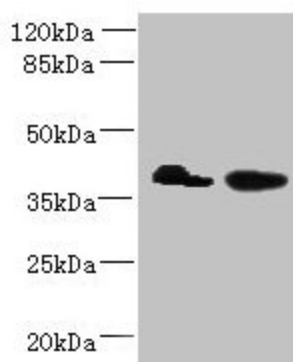
Product images:



Immunohistochemistry of paraffin-embedded human kidney tissue using [TA388201] at dilution of 1:100



Immunohistochemistry of paraffin-embedded human lung cancer using [TA388201] at dilution of 1:100



Western blot

All lanes: L3HYPDH antibody at 8 μ g/ml

Lane 1: HepG2 whole cell lysate

Lane 2: A549 whole cell lysate

Secondary

Goat polyclonal to rabbit IgG at 1/10000 dilution

Predicted band size: 39 kDa

Observed band size: 39 kDa