

Product datasheet for **TA388195M**

EAf2 Rabbit Polyclonal Antibody

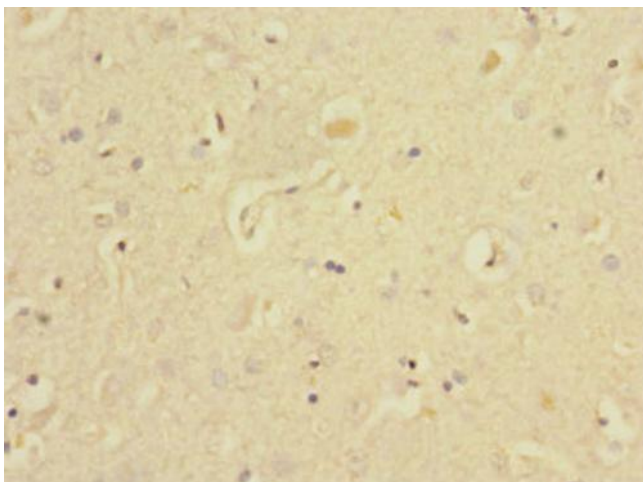
Product data:

| | |
|-----------------------|---|
| Product Type: | Primary Antibodies |
| Applications: | IHC, WB |
| Recommended Dilution: | Recommended dilution: WB:1:1000-1:5000, IHC:1:20-1:200 |
| Reactivity: | Mouse, Rat, Human |
| Host: | Rabbit |
| Isotype: | IgG |
| Clonality: | Polyclonal |
| Immunogen: | Recombinant Human ELL-associated factor 2 protein (1-170AA) |
| Formulation: | PBS with 0.02% sodium azide, 50% glycerol, pH7.3. |
| Concentration: | lot specific |
| Purification: | Antigen Affinity Purified |
| Conjugation: | Unconjugated |
| Storage: | Upon receipt, store at -20°C or -80°C. Avoid repeated freeze. |
| Stability: | 1 year from dispatch. |
| Database Link: | Q96CJ1 |
| Background: | Acts as a transcriptional transactivator of TCEA1 elongation activity (By similarity). Acts as a transcriptional transactivator of ELL and ELL2 elongation activities. Potent inducer of apoptosis in prostatic and non-prostatic cell lines. Inhibits prostate tumor growth in vivo. |

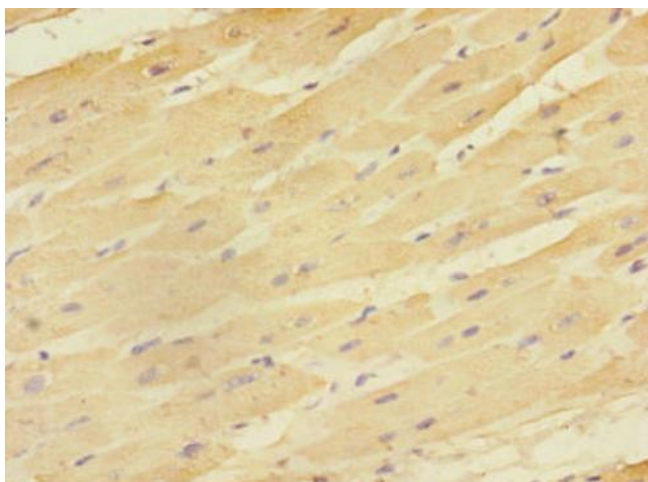


[View online »](#)

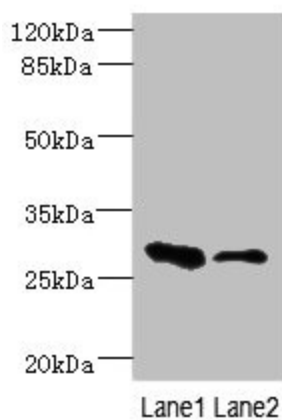
Product images:



Immunohistochemistry of paraffin-embedded human brain tissue using [TA388195] at dilution of 1:100



Immunohistochemistry of paraffin-embedded human heart tissue using [TA388195] at dilution of 1:100



Western blot

All lanes: EAF2 antibody at 3.6µg/ml

Lane 1: Rat heart tissue

Lane 2: Mouse kidney tissue

Secondary

Goat polyclonal to rabbit IgG at 1/10000 dilution

Predicted band size: 29, 15 kDa

Observed band size: 29 kDa