

## Product datasheet for **TA388193**

### ARRDC3 Rabbit Polyclonal Antibody

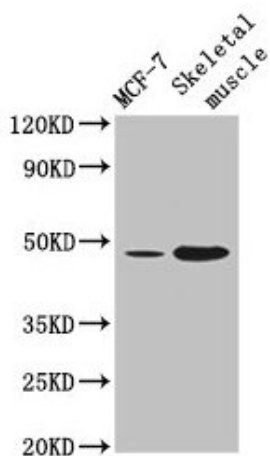
#### Product data:

Product Type:	Primary Antibodies
Applications:	WB
Recommended Dilution:	Recommended dilution: WB:1:500-1:5000
Reactivity:	Mouse, Human
Host:	Rabbit
Isotype:	IgG
Clonality:	Polyclonal
Immunogen:	Recombinant Human Arrestin domain-containing protein 3 protein (1-270AA)
Formulation:	Preservative: 0.03% Proclin 300 Constituents: 50% Glycerol, 0.01M PBS, PH 7.4
Concentration:	lot specific
Purification:	>95%, Protein G purified
Conjugation:	Unconjugated
Storage:	Upon receipt, store at -20°C or -80°C. Avoid repeated freeze.
Stability:	1 year from dispatch.
Database Link:	<a href="#">Q96B67</a>
Background:	Adapter protein that plays a role in regulating cell-surface expression of adrenergic receptors and probably also other G protein-coupled receptors (PubMed:20559325, PubMed:21982743, PubMed:23208550). Plays a role in NEDD4-mediated ubiquitination and endocytosis of activated ADRB2 and subsequent ADRB2 degradation (PubMed:20559325, PubMed:23208550). May recruit NEDD4 to ADRB2 (PubMed:20559325). Alternatively, may function as adapter protein that does not play a major role in recruiting NEDD4 to ADRB2, but rather plays a role in targeting ADRB2 to endosomes (PubMed:23208550).



[View online »](#)

## Product images:



## Western Blot

Positive WB detected in: MCF-7 whole cell lysate,  
Mouse skeletal muscle tissue

All lanes: ARRDC3 antibody at 4 $\mu$ g/ml

Secondary

Goat polyclonal to rabbit IgG at 1/50000 dilution

Predicted band size: 47 kDa

Observed band size: 47 kDa