

## Product datasheet for **TA388190M**

### **KIAA1191 Rabbit Polyclonal Antibody**

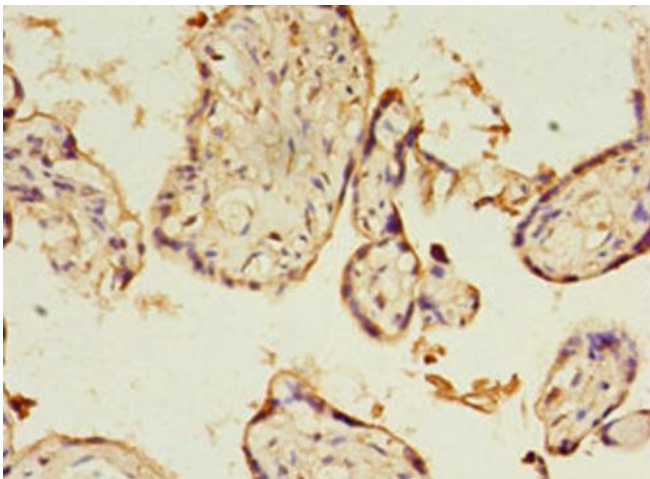
#### **Product data:**

Product Type:	Primary Antibodies
Applications:	IHC, WB
Recommended Dilution:	Recommended dilution: WB:1:200-1:1000, IHC:1:20-1:200
Reactivity:	Mouse, Human
Host:	Rabbit
Isotype:	IgG
Clonality:	Polyclonal
Immunogen:	Recombinant Human Putative monooxygenase p33MONOX protein (32-305AA)
Formulation:	Preservative: 0.03% Proclin 300 Constituents: 50% Glycerol, 0.01M PBS, PH 7.4
Concentration:	lot specific
Purification:	>95%, Protein G purified
Conjugation:	Unconjugated
Storage:	Upon receipt, store at -20°C or -80°C. Avoid repeated freeze.
Stability:	1 year from dispatch.
Database Link:	<a href="#">Q96A73</a>
Background:	Potential NADPH-dependent oxidoreductase. May be involved in the regulation of neuronal survival, differentiation and axonal outgrowth.

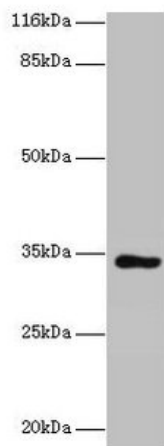


[View online »](#)

## Product images:



Immunohistochemistry of paraffin-embedded human placenta tissue using [TA388190] at dilution of 1:100



Western blot  
All lanes: KIAA1191 antibody at 2µg/ml + Mouse heart tissue  
Secondary  
Goat polyclonal to rabbit IgG at 1/10000 dilution  
Predicted band size: 34, 32, 11 kDa  
Observed band size: 34 kDa