

Product datasheet for **TA388186M**

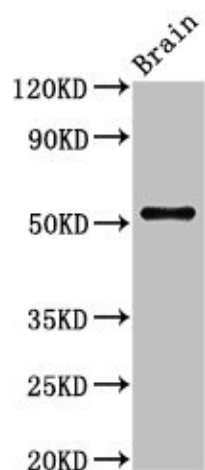
ASZ1 Rabbit Polyclonal Antibody

Product data:

Product Type:	Primary Antibodies
Applications:	IF, IHC, WB
Recommended Dilution:	Recommended dilution: WB:1:500-1:5000, IHC:1:20-1:200, IF:1:50-1:200
Reactivity:	Rat, Human
Host:	Rabbit
Isotype:	IgG
Clonality:	Polyclonal
Immunogen:	Recombinant Human Ankyrin repeat, SAM and basic leucine zipper domain-containing protein 1 protein (1-200AA)
Formulation:	Preservative: 0.03% Proclin 300 Constituents: 50% Glycerol, 0.01M PBS, PH 7.4
Concentration:	lot specific
Purification:	>95%, Protein G purified
Conjugation:	Unconjugated
Storage:	Upon receipt, store at -20°C or -80°C. Avoid repeated freeze.
Stability:	1 year from dispatch.
Database Link:	Q8WWH4
Background:	Plays a central role during spermatogenesis by repressing transposable elements and preventing their mobilization, which is essential for the germline integrity. Acts via the piRNA metabolic process, which mediates the repression of transposable elements during meiosis by forming complexes composed of piRNAs and Piwi proteins and governs the methylation and subsequent repression of transposons. Its association with pi-bodies suggests a participation in the primary piRNAs metabolic process. Required prior to the pachytene stage to facilitate the production of multiple types of piRNAs, including those associated with repeats involved in the regulation of retrotransposons. May act by mediating protein-protein interactions during germ cell maturation.

[View online »](#)

Product images:



Western Blot

Positive WB detected in: Rat brain tissue

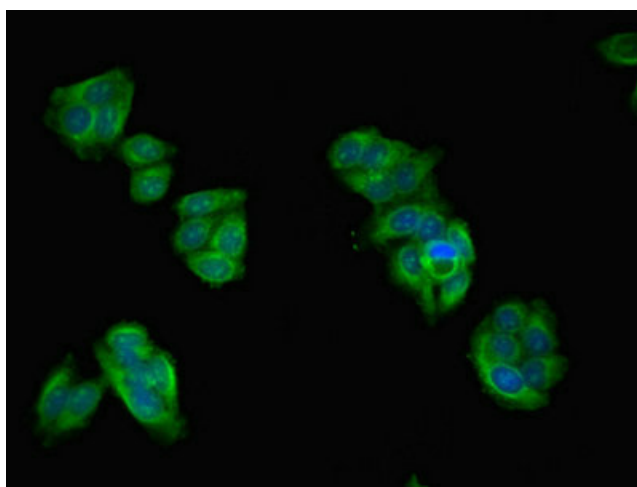
All lanes: ASZ1 antibody at 2.7 μ g/ml

Secondary

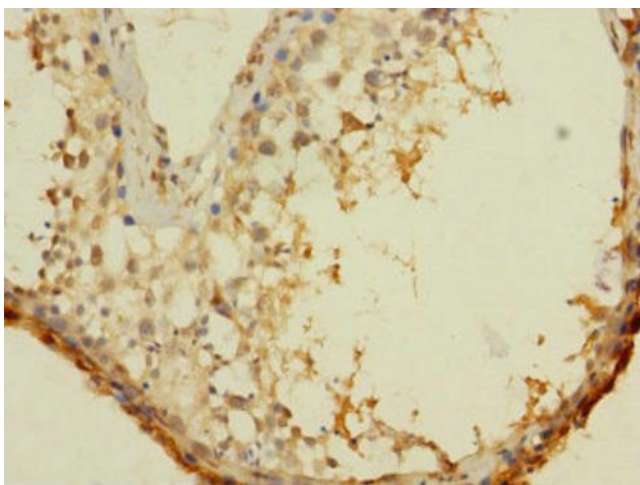
Goat polyclonal to rabbit IgG at 1/50000 dilution

Predicted band size: 54, 53 kDa

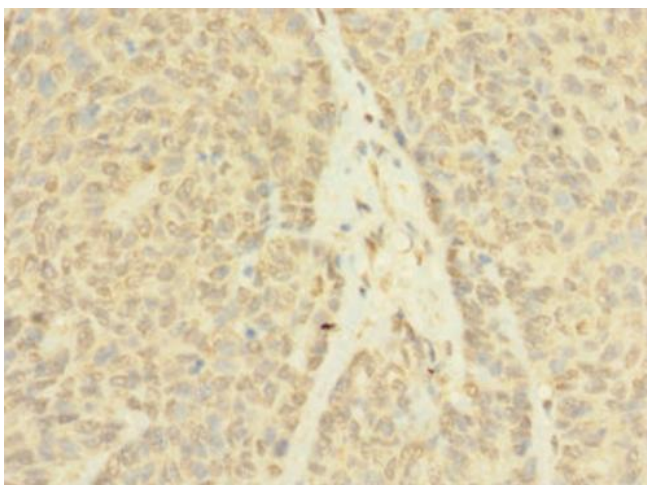
Observed band size: 54 kDa



Immunofluorescent analysis of HepG2 cells using [TA388186] at dilution of 1:100 and Alexa Fluor 488-conjugated AffiniPure Goat Anti-Rabbit IgG(H+L)



Immunohistochemistry of paraffin-embedded human testis tissue using [TA388186] at dilution of 1:100



Immunohistochemistry of paraffin-embedded human ovarian cancer using [TA388186] at dilution of 1:100