

Product datasheet for **TA388179**

SPPL3 Rabbit Polyclonal Antibody

Product data:

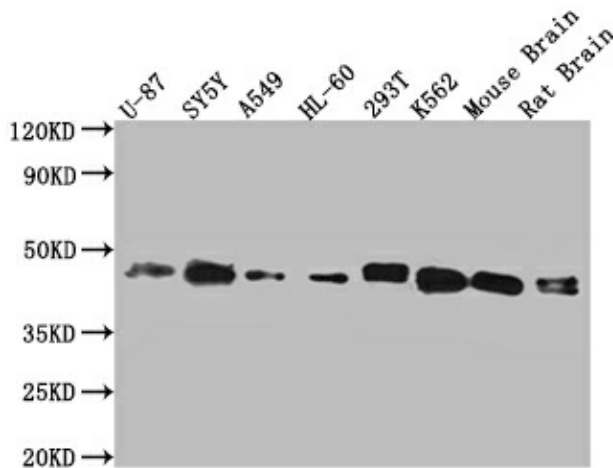
Product Type:	Primary Antibodies
Applications:	IF, WB
Recommended Dilution:	Recommended dilution: WB:1:200-1:2000, IF:1:50-1:200
Reactivity:	Human
Host:	Rabbit
Isotype:	IgG
Clonality:	Polyclonal
Immunogen:	Recombinant Human Signal peptide peptidase-like 3 protein (213-263AA)
Formulation:	Preservative: 0.03% Proclin 300 Constituents: 50% Glycerol, 0.01M PBS, PH 7.4
Concentration:	lot specific
Purification:	>95%, Protein G purified
Conjugation:	Unconjugated
Storage:	Upon receipt, store at -20°C or -80°C. Avoid repeated freeze.
Stability:	1 year from dispatch.
Database Link:	Q8TCT6



[View online »](#)

Background:

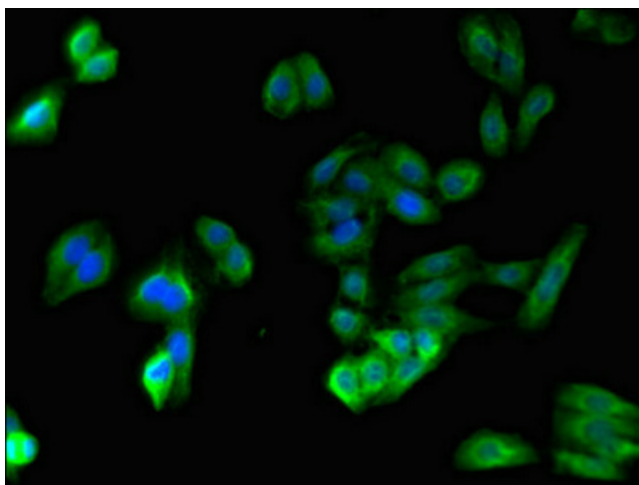
Intramembrane-cleaving aspartic protease (I-CLiP) that cleaves type II membrane protein substrates in or close to their luminal transmembrane domain boundaries (PubMed:16873890, PubMed:25354954, PubMed:25827571). Acts like a sheddase by mediating the proteolytic release and secretion of active site-containing ectodomains of glycan-modifying glycosidase and glycosyltransferase enzymes such as MGAT5, B4GAT1 and B4GALT1 (PubMed:25354954, PubMed:25827571). Catalyzes the intramembrane cleavage of the envelope glycoprotein gp130 and/or the leader peptide gp18LP of the simian foamy virus independent of prior ectodomain shedding by furin or furin-like proprotein convertase (PC)-mediated cleavage proteolysis (PubMed:23132852). May also have the ability to serve as a shedding protease for subsequent intramembrane proteolysis by SPPL2A and SPPL2B of the envelope glycoprotein gp130 (PubMed:23132852). Plays a role in the regulation of cellular glycosylation processes (PubMed:25354954). Required to link T-cell antigen receptor (TCR) and calcineurin-NFAT signaling cascades in lymphocytes by promoting the association of STIM1 and ORAI1 during store-operated calcium entry (SOCE) in a protease-independent manner (PubMed:25384971).

Product images:**Western Blot**

Positive WB detected in: HeLa whole cell lysate, HepG2 whole cell lysate, Jurkat whole cell lysate, MCF-7 whole cell lysate

All lanes: SPPL3 antibody at 3 μ g/ml
Secondary

Goat polyclonal to rabbit IgG at 1/50000 dilution
Predicted band size: 43, 19 kDa
Observed band size: 43 kDa



Immunofluorescent analysis of HepG2 cells using TA388179 at dilution of 1:100 and Alexa Fluor 488-conjugated AffiniPure Goat Anti-Rabbit IgG(H+L)