

Product datasheet for **TA388174**

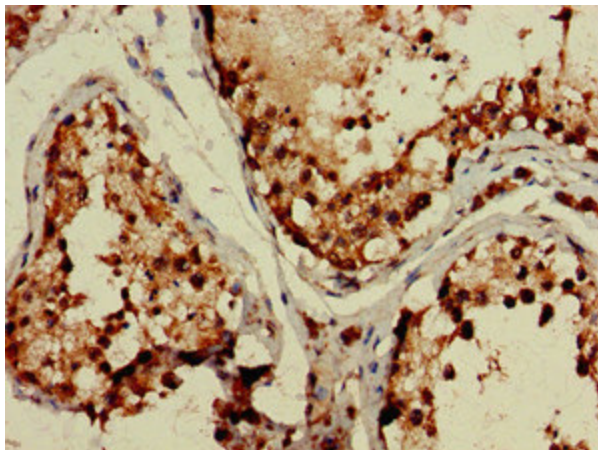
TBC1D15 Rabbit Polyclonal Antibody

Product data:

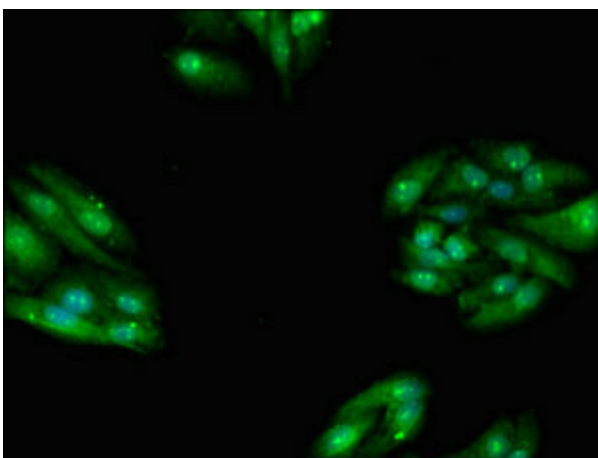
| | |
|------------------------------|--|
| Product Type: | Primary Antibodies |
| Applications: | IF, IHC, WB |
| Recommended Dilution: | Recommended dilution: WB:1:500-1:5000, IHC:1:20-1:200, IF:1:50-1:200 |
| Reactivity: | Human |
| Host: | Rabbit |
| Isotype: | IgG |
| Clonality: | Polyclonal |
| Immunogen: | Recombinant Human TBC1 domain family member 15 protein (283-404AA) |
| Formulation: | Preservative: 0.03% Proclin 300 Constituents: 50% Glycerol, 0.01M PBS, pH 7.4 |
| Concentration: | lot specific |
| Purification: | >95%, Protein G purified |
| Conjugation: | Unconjugated |
| Storage: | Upon receipt, store at -20°C or -80°C. Avoid repeated freeze. |
| Stability: | 1 year from dispatch. |
| Database Link: | Q8TC07 |
| Background: | Acts as a GTPase activating protein for RAB7A. Does not act on RAB4, RAB5 or RAB6 (By similarity). |



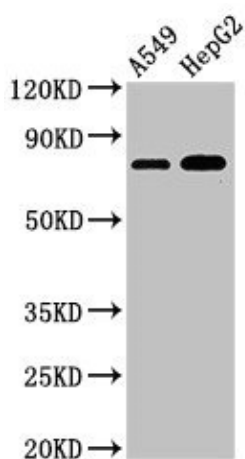
[View online »](#)

Product images:

Immunohistochemistry of paraffin-embedded human testis tissue using TA388174 at dilution of 1:100



Immunofluorescent analysis of HepG2 cells using TA388174 at dilution of 1:100 and Alexa Fluor 488-conjugated AffiniPure Goat Anti-Rabbit IgG(H+L)



Western Blot

Positive WB detected in: A549 whole cell lysate,
HepG2 whole cell lysate

All lanes: TBC1D15 antibody at 3 μ g/ml

Secondary

Goat polyclonal to rabbit IgG at 1/50000 dilution

Predicted band size: 80, 78, 79 kDa

Observed band size: 80 kDa