

Product datasheet for **TA388173M**

CEP76 Rabbit Polyclonal Antibody

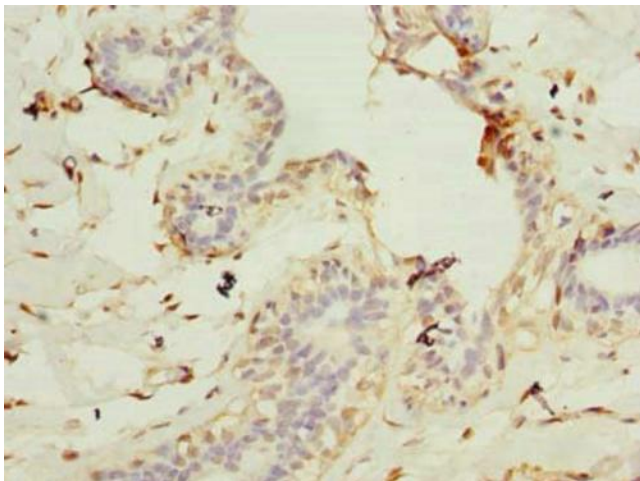
Product data:

Product Type:	Primary Antibodies
Applications:	IHC, WB
Recommended Dilution:	Recommended dilution: WB:1:500-1:2000, IHC:1:20-1:200
Reactivity:	Human
Host:	Rabbit
Isotype:	IgG
Clonality:	Polyclonal
Immunogen:	Recombinant Human Centrosomal protein of 76 kDa protein (241-550AA)
Formulation:	Preservative: 0.03% Proclin 300 Constituents: 50% Glycerol, 0.01M PBS, PH 7.4
Concentration:	lot specific
Purification:	>95%, Protein G purified
Conjugation:	Unconjugated
Storage:	Upon receipt, store at -20°C or -80°C. Avoid repeated freeze.
Stability:	1 year from dispatch.
Database Link:	Q8TAP6
Background:	Centrosomal protein involved in regulation of centriole duplication. Required to limit centriole duplication to once per cell cycle by preventing centriole reduplication.

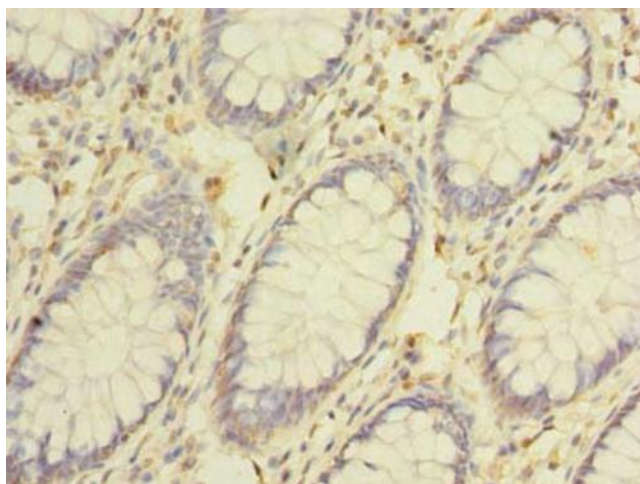


[View online »](#)

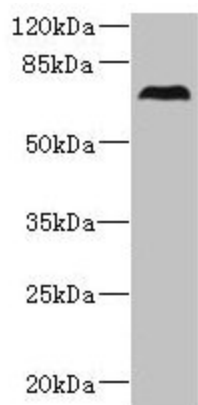
Product images:



Immunohistochemistry of paraffin-embedded human breast cancer using [TA388173] at dilution of 1:100



Immunohistochemistry of paraffin-embedded human colon cancer using [TA388173] at dilution of 1:100



Western blot

All lanes: CEP76 antibody at 0.5µg/ml + 293T whole cell lysate

Secondary

Goat polyclonal to rabbit IgG at 1/10000 dilution

Predicted band size: 75, 66, 30 kDa

Observed band size: 75 kDa