

Product datasheet for **TA388167M**

CSNK1A1L Rabbit Polyclonal Antibody

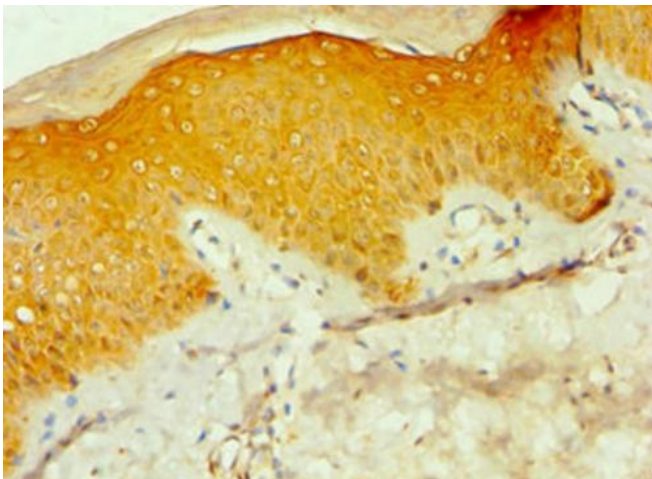
Product data:

Product Type:	Primary Antibodies
Applications:	IHC, WB
Recommended Dilution:	Recommended dilution: WB:1:500-1:2000, IHC:1:20-1:200
Reactivity:	Human
Host:	Rabbit
Isotype:	IgG
Clonality:	Polyclonal
Immunogen:	Recombinant Human Casein kinase I isoform alpha-like protein (1-337AA)
Formulation:	PBS with 0.02% sodium azide, 50% glycerol, pH7.3.
Concentration:	lot specific
Purification:	Antigen Affinity Purified
Conjugation:	Unconjugated
Storage:	Upon receipt, store at -20°C or -80°C. Avoid repeated freeze.
Stability:	1 year from dispatch.
Database Link:	Q8N752
Background:	Casein kinases are operationally defined by their preferential utilization of acidic proteins such as caseins as substrates. It can phosphorylate a large number of proteins. Participates in Wnt signaling .

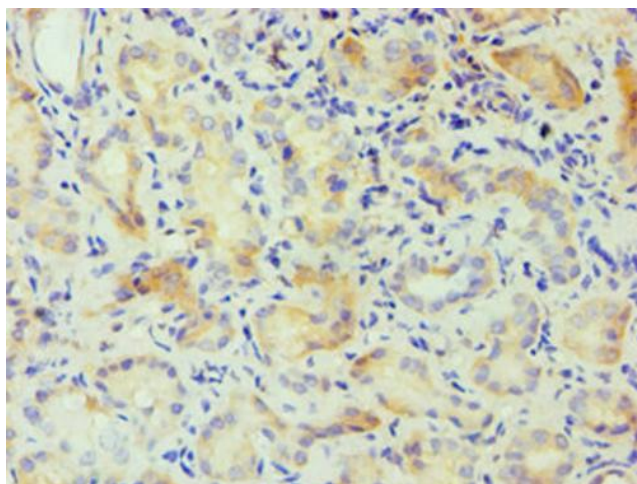


[View online »](#)

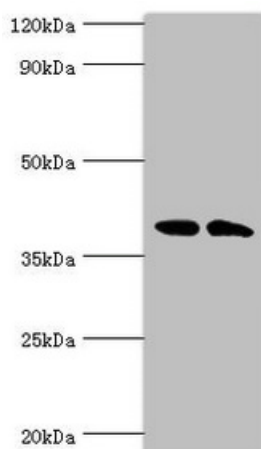
Product images:



Immunohistochemistry of paraffin-embedded human skin tissue using [TA388167] at dilution of 1:100



Immunohistochemistry of paraffin-embedded human kidney tissue using [TA388167] at dilution of 1:100



Western blot

All lanes: Casein kinase I isoform alpha-like antibody at 4 μ g/ml

Lane 1: K562 whole cell lysate

Lane 2: HeLa whole cell lysate

Secondary

Goat polyclonal to rabbit IgG at 1/10000 dilution

Predicted band size: 39 kDa

Observed band size: 39 kDa