

## Product datasheet for **TA388166M**

### **KIR3DL3 Rabbit Polyclonal Antibody**

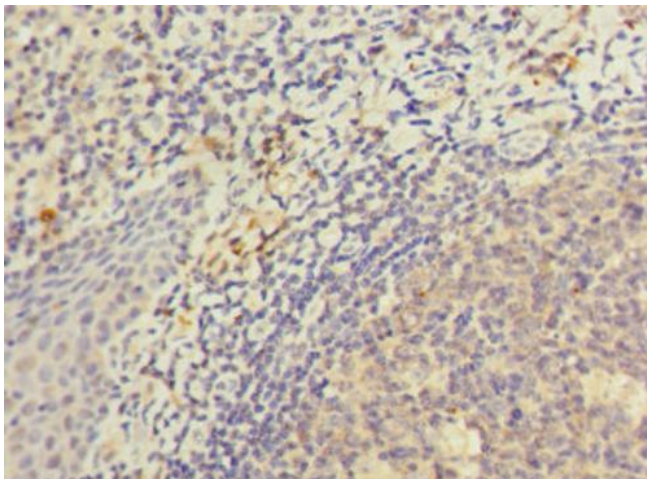
#### **Product data:**

Product Type:	Primary Antibodies
Applications:	IHC, WB
Recommended Dilution:	Recommended dilution: WB:1:1000-1:5000, IHC:1:20-1:200
Reactivity:	Human
Host:	Rabbit
Isotype:	IgG
Clonality:	Polyclonal
Immunogen:	Recombinant Human Killer cell immunoglobulin-like receptor 3DL3 protein (26-322AA)
Formulation:	PBS with 0.02% sodium azide, 50% glycerol, pH7.3.
Concentration:	lot specific
Purification:	Antigen Affinity Purified
Conjugation:	Unconjugated
Storage:	Upon receipt, store at -20°C or -80°C. Avoid repeated freeze.
Stability:	1 year from dispatch.
Database Link:	<a href="#">Q8N743</a>
Background:	Receptor on natural killer cells. May inhibit the activity of NK cells thus preventing cell lysis.

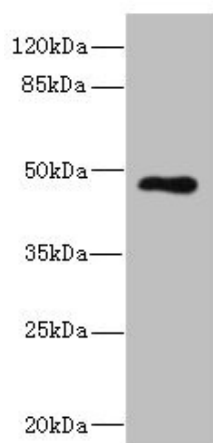


[View online »](#)

## Product images:



Immunohistochemistry of paraffin-embedded human tonsil tissue using [TA388166] at dilution of 1:100



Western blot  
All lanes: KIR3DL3 antibody at 1.75µg/ml + Jurkat whole cell lysate  
Secondary  
Goat polyclonal to rabbit IgG at 1/10000 dilution  
Predicted band size: 45 kDa  
Observed band size: 45 kDa