

## Product datasheet for **TA388164**

### **TTC9C Rabbit Polyclonal Antibody**

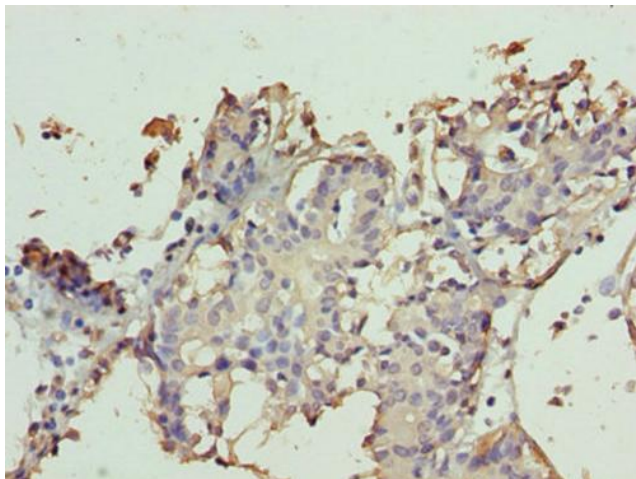
#### **Product data:**

|                       |                                                                                                                                                                                   |
|-----------------------|-----------------------------------------------------------------------------------------------------------------------------------------------------------------------------------|
| Product Type:         | Primary Antibodies                                                                                                                                                                |
| Applications:         | IHC, WB                                                                                                                                                                           |
| Recommended Dilution: | Recommended dilution: WB:1:1000-1:5000, IHC:1:20-1:200                                                                                                                            |
| Reactivity:           | Human                                                                                                                                                                             |
| Host:                 | Rabbit                                                                                                                                                                            |
| Isotype:              | IgG                                                                                                                                                                               |
| Clonality:            | Polyclonal                                                                                                                                                                        |
| Immunogen:            | Recombinant Human Tetratricopeptide repeat protein 9C protein (1-171AA)                                                                                                           |
| Formulation:          | Preservative: 0.03% Proclin 300<br>Constituents: 50% Glycerol, 0.01M PBS, PH 7.4                                                                                                  |
| Concentration:        | lot specific                                                                                                                                                                      |
| Purification:         | >95%, Protein G purified                                                                                                                                                          |
| Conjugation:          | Unconjugated                                                                                                                                                                      |
| Storage:              | Upon receipt, store at -20°C or -80°C. Avoid repeated freeze.                                                                                                                     |
| Stability:            | 1 year from dispatch.                                                                                                                                                             |
| Database Link:        | <a href="#">Q8N5M4</a>                                                                                                                                                            |
| Background:           | cytoplasm, endoplasmic reticulum membrane, FK506 binding, peptidyl-prolyl cis-trans isomerase activity, chaperone-mediated protein folding, protein peptidyl-prolyl isomerization |



[View online »](#)

## Product images:



Immunohistochemistry of paraffin-embedded human breast cancer using TA388164 at dilution of 1:100



Western blot  
All lanes: TTC9C antibody at 12µg/ml + THP-1 whole cell lysate  
Secondary  
Goat polyclonal to rabbit IgG at 1/10000 dilution  
Predicted band size: 21, 25 kDa  
Observed band size: 21 kDa